

\$1,720,000 - 39505 Highway 2, Blackfalds

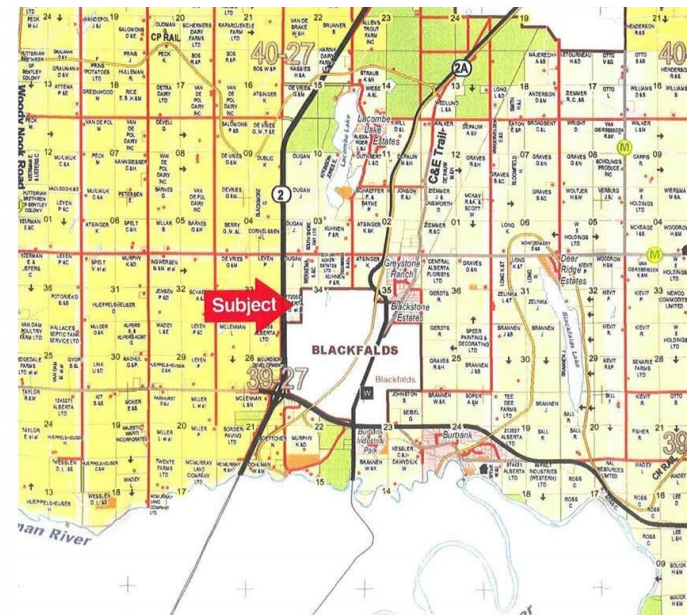
MLS® #A2016533

\$1,720,000

0 Bedroom, 0.00 Bathroom,
Commercial on 73.19 Acres

NONE, Blackfalds, Alberta

73.19 ACRES of development land located east of Highway 2 in the Town of Blackfalds. Presently has Industrial Development to the south boundary and residential development to the east side. Town is open to either Industrial or residential development. Excellent exposure to Highway #2. Excellent Investment Property in one of the fastest growing communities in Alberta.



Essential Information

| | |
|-----------|-------------|
| MLS® # | A2016533 |
| Price | \$1,720,000 |
| Bathrooms | 0.00 |
| Acres | 73.19 |
| Type | Commercial |
| Sub-Type | Mixed Use |
| Status | Active |

Community Information

| | |
|-------------|-----------------|
| Address | 39505 Highway 2 |
| Subdivision | NONE |
| City | Blackfalds |
| County | Lacombe County |
| Province | Alberta |
| Postal Code | T0M 0J0 |

Additional Information

| | |
|-------------|---------------------|
| Date Listed | December 28th, 2022 |
|-------------|---------------------|

| | |
|----------------|-----|
| Days on Market | 951 |
| Zoning | AG |

Listing Details

| | |
|----------------|------------------------------------|
| Listing Office | RE/MAX real estate central alberta |
|----------------|------------------------------------|

Data is supplied by Pillar 9â„¢ MLS® System. Pillar 9â„¢ is the owner of the copyright in its MLS® System. Data is deemed reliable but is not guaranteed accurate by Pillar 9â„¢. The trademarks MLS®, Multiple Listing Service® and the associated logos are owned by The Canadian Real Estate Association (CREA) and identify the quality of services provided by real estate professionals who are members of CREA. Used under license.