

\$16 - 29 Beju Industrial Drive, Sylvan Lake

MLS® #A2076221

\$16

0 Bedroom, 0.00 Bathroom,
Commercial on 0.00 Acres

Beju Industrial Park, Sylvan Lake, Alberta

6,000 SF build to suite pad site available to lease next to a well kept, almost new building in Beju Industrial Park. There is easy access to and from Highway 20, and ample paved parking in front. Great location for your business to grow and thrive. Asking lease rate is \$16.00 per SF, and additional rent is set at \$5.50 per SF for the 2023 budget year.

Built in 2016

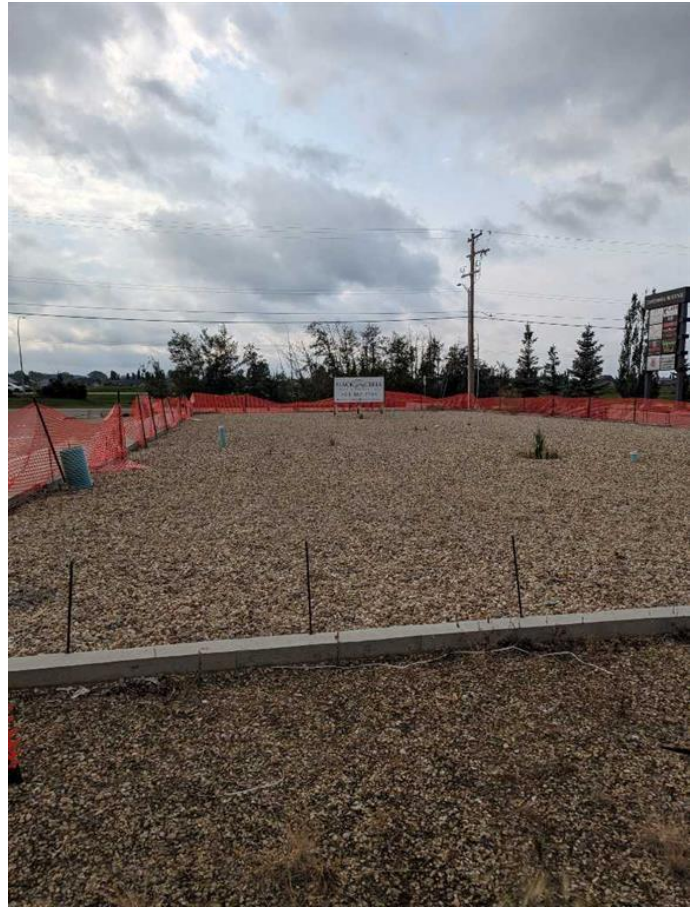
Essential Information

MLS® #	A2076221
Price	\$16
Bathrooms	0.00
Acres	0.00
Year Built	2016
Type	Commercial
Sub-Type	Mixed Use
Status	Active

Community Information

Address	29 Beju Industrial Drive
Subdivision	Beju Industrial Park
City	Sylvan Lake
County	Red Deer County
Province	Alberta
Postal Code	T4S 0B6

Additional Information



Date Listed	August 25th, 2023
Days on Market	707
Zoning	CH

Listing Details

Listing Office	RE/MAX Commercial Properties
----------------	------------------------------

Data is supplied by Pillar 9â„¢ MLSÂ® System. Pillar 9â„¢ is the owner of the copyright in its MLSÂ® System. Data is deemed reliable but is not guaranteed accurate by Pillar 9â„¢. The trademarks MLSÂ®, Multiple Listing ServiceÂ® and the associated logos are owned by The Canadian Real Estate Association (CREA) and identify the quality of services provided by real estate professionals who are members of CREA. Used under license.