

\$1,190,000 - 141 Coachwood Point W, Lethbridge

MLS® #A2106765

\$1,190,000

4 Bedroom, 4.00 Bathroom, 3,156 sqft

Residential on 0.17 Acres

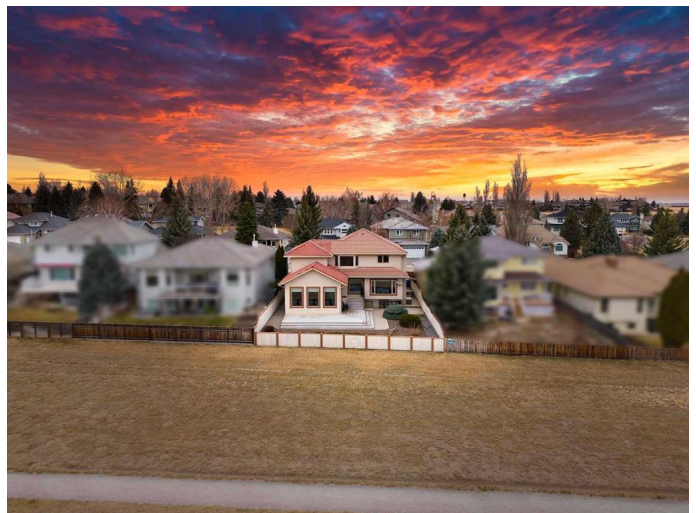
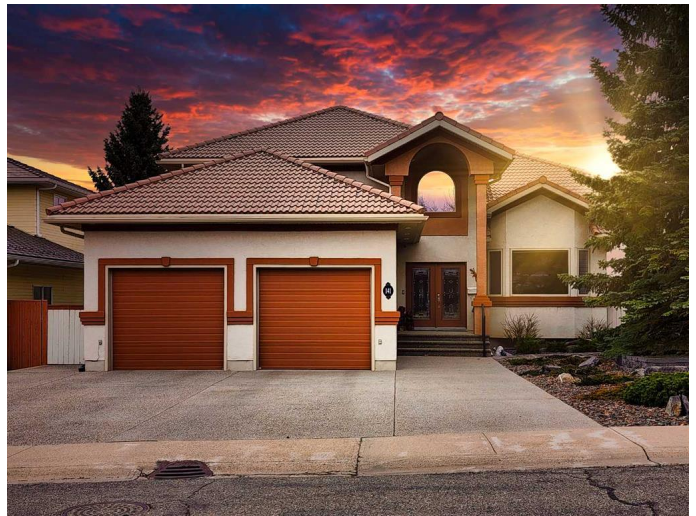
Ridgewood, Lethbridge, Alberta

EXECUTIVE LUXURY HOME WITH A MILLION DOLLAR VIEW. This incredible two story dream home exceeds expectations on all levels. The front street appeal is apparent with a perfectly manicured yard as well as custom finished exterior trim. The front entrance is grandiose with an impressive spiral stair case leading to a quaint sitting / reading area , office, bedroom , bathroom ,primary bedroom with incredible ensuite and walk in closet, all with outstanding coulee views. The main floors boasts executive style living with a formal dining room, massive master chef kitchen / family room and a separate sunken sitting tv fireplace room. The main floor also boasts another bathroom , huge rear entrance leading into a pristine heated insulated garage. The lower level of this home offers two large bedrooms, a gym , bathroom , workroom and another huge family room, there is also a walk up walk out covered entrance leading to an impeccable huge deck and manicured back yard/ out door living space

Built in 1988

Essential Information

MLS® #	A2106765
Price	\$1,190,000
Bedrooms	4
Bathrooms	4.00
Full Baths	3



Half Baths	1
Square Footage	3,156
Acres	0.17
Year Built	1988
Type	Residential
Sub-Type	Detached
Style	2 Storey
Status	Active

Community Information

Address	141 Coachwood Point W
Subdivision	Ridgewood
City	Lethbridge
County	Lethbridge
Province	Alberta
Postal Code	T1K 6A6

Amenities

Parking Spaces	6
Parking	Double Garage Attached
# of Garages	2

Interior

Interior Features	Open Floorplan, Central Vacuum, No Animal Home, No Smoking Home
Appliances	Dishwasher, Microwave, Refrigerator, Central Air Conditioner, Electric Oven, Electric Stove, Garage Control(s), Washer/Dryer, Window Coverings
Heating	Forced Air, Fireplace(s)
Cooling	Central Air
Fireplace	Yes
# of Fireplaces	1
Fireplaces	Gas
Has Basement	Yes
Basement	Finished, Full, Walk-Up To Grade

Exterior

Exterior Features	Misting System
Lot Description	Backs on to Park/Green Space, Back Yard, Landscaped
Roof	Clay Tile

Construction	Concrete, Stucco
Foundation	Poured Concrete

Additional Information

Date Listed	February 9th, 2024
Days on Market	492
Zoning	R-L

Listing Details

Listing Office	RE/MAX REAL ESTATE - LETHBRIDGE
----------------	---------------------------------

Data is supplied by Pillar 9â„¢ MLS® System. Pillar 9â„¢ is the owner of the copyright in its MLS® System. Data is deemed reliable but is not guaranteed accurate by Pillar 9â„¢. The trademarks MLS®, Multiple Listing Service® and the associated logos are owned by The Canadian Real Estate Association (CREA) and identify the quality of services provided by real estate professionals who are members of CREA. Used under license.