

# \$17 - 1470, 10130 103 Street Nw, Edmonton

MLS® #A2111522

**\$17**

0 Bedroom, 0.00 Bathroom,  
Commercial on 0.00 Acres

Downtown\_EDMO, Edmonton, Alberta

[Click brochure link to view more details.\\*\\*](#)

Base-Building Condition, Turn-key  
Opportunities Available.

10130 " 103 St (better known as 103 Street Centre) is where it all comes together for a new generation of businesses. The Class "A" office tower is located in the heart of downtown Edmonton.

The building offers flexible suites ranging from 1,000 sq.ft. to 124,000 sq.ft. over 22 floors with turnkey improvement packages available. 103 Street Centre is an ideal location for business founders and entrepreneurs to build their business in Edmonton but reach a global market.

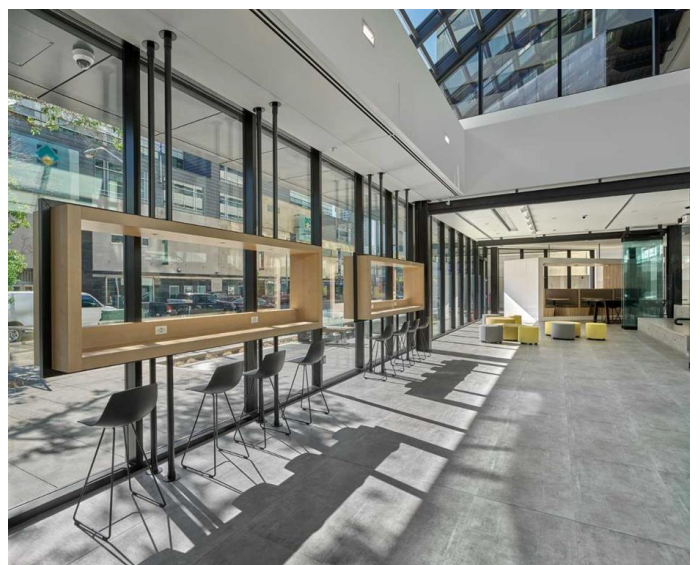
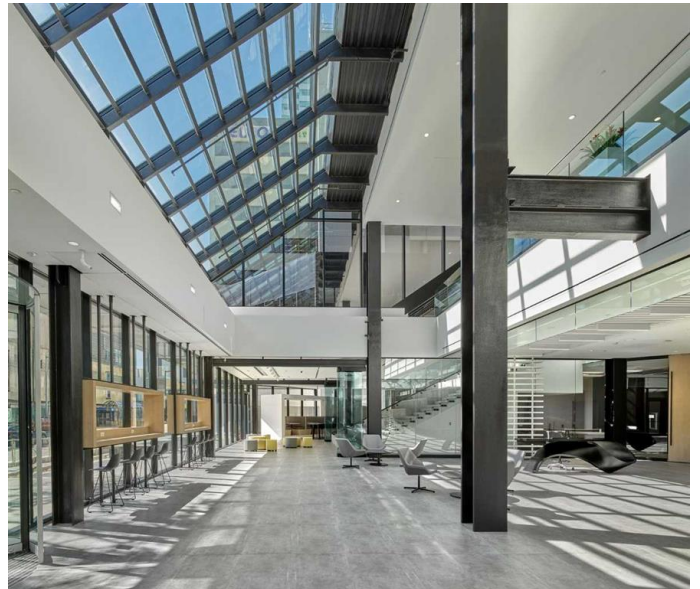
The building provides direct access to the Edmonton Pedway system through Enterprise Square, cycling networks and is accessible to public transit via bus and LRT (Bay/Enterprise Square) service is within a one block radius.

103 Street Centre offers prime amenities for tenants including a presentation area/social stair, on-demand meeting spaces, exclusive tenant lounge and tenant gym.

Built in 1980

## Essential Information

MLS® #                    A2111522



Price	\$17
Bathrooms	0.00
Acres	0.00
Year Built	1980
Type	Commercial
Sub-Type	Office
Status	Active

### **Community Information**

Address	1470, 10130 103 Street Nw
Subdivision	Downtown_EDMO
City	Edmonton
County	Edmonton
Province	Alberta
Postal Code	T5J 3N9

### **Additional Information**

Date Listed	March 1st, 2024
Days on Market	244

### **Listing Details**

Listing Office	Honestdoor Inc.
----------------	-----------------

Data is supplied by Pillar 9â„¢ MLSÂ® System. Pillar 9â„¢ is the owner of the copyright in its MLSÂ® System. Data is deemed reliable but is not guaranteed accurate by Pillar 9â„¢. The trademarks MLSÂ®, Multiple Listing ServiceÂ® and the associated logos are owned by The Canadian Real Estate Association (CREA) and identify the quality of services provided by real estate professionals who are members of CREA. Used under license.