

# \$134,900 - 1014 2nd Ave, Beaverlodge

MLS® #A2125392

**\$134,900**

0 Bedroom, 0.00 Bathroom,  
Land on 0.32 Acres

N/A, Beaverlodge, Alberta

Excellent commercial lot zoned C1 in the heart of Beaverlodge. 3+ lots on 3 separate titles totaling close to 1/3 of an acre or 115 feet by 120 feet. Close enough to the highway for exposure and right downtown. Ideal location for many retail, restaurant, or professional buildings.

## Essential Information

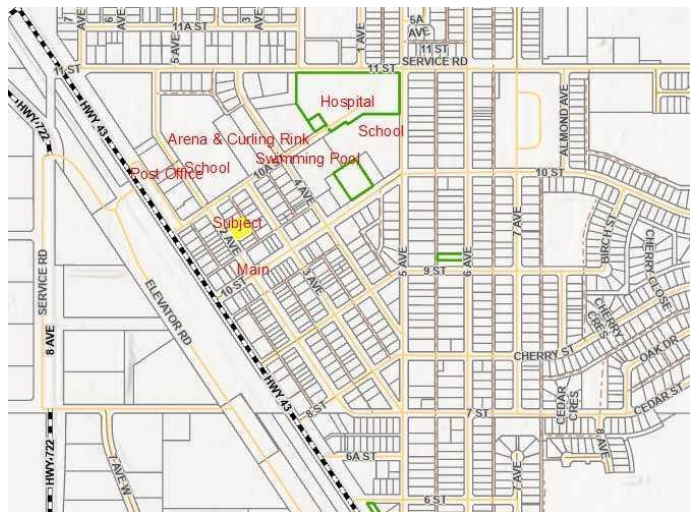
MLS® #	A2125392
Price	\$134,900
Bathrooms	0.00
Acres	0.32
Type	Land
Sub-Type	Commercial Land
Status	Active

## Community Information

Address	1014 2nd Ave
Subdivision	N/A
City	Beaverlodge
County	Grande Prairie No. 1, County
Province	Alberta
Postal Code	T0H 0C0

## Additional Information

Date Listed	April 23rd, 2024
Days on Market	372
Zoning	C1



# Listing Details

Listing Office                      RE/MAX Grande Prairie

Data is supplied by Pillar 9â„¢ MLS® System. Pillar 9â„¢ is the owner of the copyright in its MLS® System. Data is deemed reliable but is not guaranteed accurate by Pillar 9â„¢. The trademarks MLS®, Multiple Listing Service® and the associated logos are owned by The Canadian Real Estate Association (CREA) and identify the quality of services provided by real estate professionals who are members of CREA. Used under license.