

\$1,500 - 3, 1611 Broadway Avenue E, Redcliff

MLS® #A2162785

\$1,500

0 Bedroom, 0.00 Bathroom,
Commercial on 0.00 Acres

Redcliff Industrial, Redcliff, Alberta

The 1,500 sq ft main floor offers a reception area, 3 offices, staff room, file storage space and 2 pc washroom. At the rear of the building is a workshop space with a 14' overhead door. Four offices, file storage area and mechanical are included in the approx. 500 sq ft mezzanine above. Operating costs are estimated to be \$2.25/sq ft (proportionate share of property taxes, bldg insurance, etc). Great location with easy access to Trans Canada Highway. Excellent space at an affordable lease.

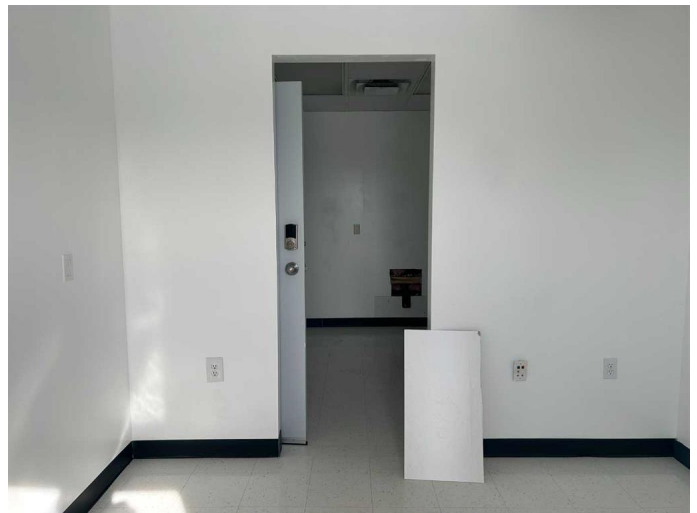
Built in 2002

Essential Information

MLS® #	A2162785
Price	\$1,500
Bathrooms	0.00
Acres	0.00
Year Built	2002
Type	Commercial
Sub-Type	Industrial
Status	Active

Community Information

Address	3, 1611 Broadway Avenue E
Subdivision	Redcliff Industrial
City	Redcliff
County	Cypress County
Province	Alberta



Postal Code T0J 2P0

Interior

Heating Forced Air

Exterior

Foundation Poured Concrete

Additional Information

Date Listed September 13th, 2024

Days on Market 231

Zoning I1

Listing Details

Listing Office RE/MAX MEDALTA REAL ESTATE

Data is supplied by Pillar 9â„¸ MLSÂ® System. Pillar 9â„¸ is the owner of the copyright in its MLSÂ® System. Data is deemed reliable but is not guaranteed accurate by Pillar 9â„¸. The trademarks MLSÂ®, Multiple Listing ServiceÂ® and the associated logos are owned by The Canadian Real Estate Association (CREA) and identify the quality of services provided by real estate professionals who are members of CREA. Used under license.