

\$415,450 - 280, 198 Nolanridge Crescent Nw, Calgary

MLS® #A2166915

\$415,450

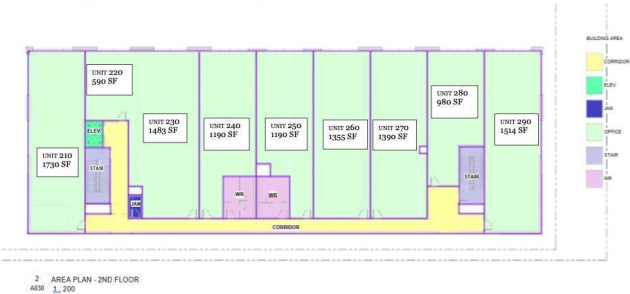
0 Bedroom, 0.00 Bathroom,
Commercial on 0.00 Acres

Nolan Hill, Calgary, Alberta

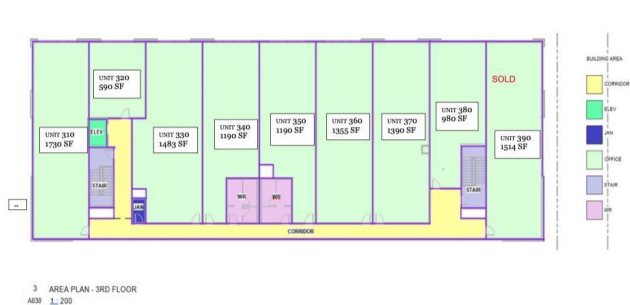
Welcome to these second and third floor units ranging from 590 sqft - 21,330 sqft in the thriving community of Nolan Hill, NW Calgary. Located on high-traffic Sarcee Trail, this space offers exceptional visibility and is perfect for a wide range of uses, including Professional, medical or dental offices, veterinary clinics, restaurants, gyms, salons, etc. Surrounded by numerous anchor tenants and shopping centres, this prime location is also supported by a growing, high-density residential population from neighbouring communities. Listing unit is 1187 sqf. Available for lease as well.



SECOND FLOOR LAYOUT



THIRD FLOOR LAYOUT



Built in 2024

Essential Information

| | |
|------------|------------|
| MLS® # | A2166915 |
| Price | \$415,450 |
| Bathrooms | 0.00 |
| Acres | 0.00 |
| Year Built | 2024 |
| Type | Commercial |
| Sub-Type | Business |
| Status | Active |

Community Information

| | |
|-------------|---------------------------------|
| Address | 280, 198 Nolanridge Crescent Nw |
| Subdivision | Nolan Hill |
| City | Calgary |

| | |
|-------------|---------|
| County | Calgary |
| Province | Alberta |
| Postal Code | T3R 1W9 |

Additional Information

| | |
|----------------|----------------------|
| Date Listed | September 18th, 2024 |
| Days on Market | 227 |
| Zoning | I-C |

Listing Details

| | |
|----------------|-------------------------|
| Listing Office | Century 21 Bravo Realty |
|----------------|-------------------------|

Data is supplied by Pillar 9â„¢ MLSÂ® System. Pillar 9â„¢ is the owner of the copyright in its MLSÂ® System. Data is deemed reliable but is not guaranteed accurate by Pillar 9â„¢. The trademarks MLSÂ®, Multiple Listing ServiceÂ® and the associated logos are owned by The Canadian Real Estate Association (CREA) and identify the quality of services provided by real estate professionals who are members of CREA. Used under license.