

# \$1,800,000 - 1450 Strachan Road Se, Medicine Hat

MLS® #A2167935

**\$1,800,000**

0 Bedroom, 0.00 Bathroom,  
Commercial on 2.06 Acres

Southland, Medicine Hat, Alberta

This easily accessible and highly visible stand-alone commercial building is located just off the Trans-Canada Highway. The 8,249 SF building features a modern showroom, three private offices with additional office space located on the second floor. Users can benefit from the staff lounge, kitchenette, a parts and storage space with a mezzanine, and a well-equip shop with trench drainage. The shop area offers three drive-in bay with 12'x12' OHDs.

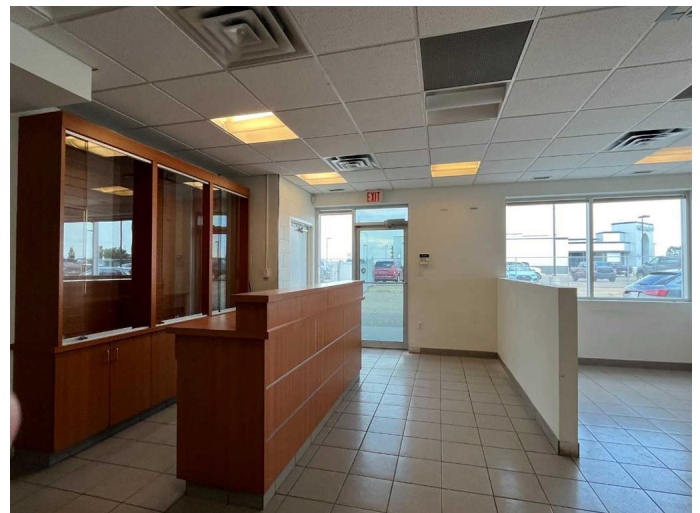
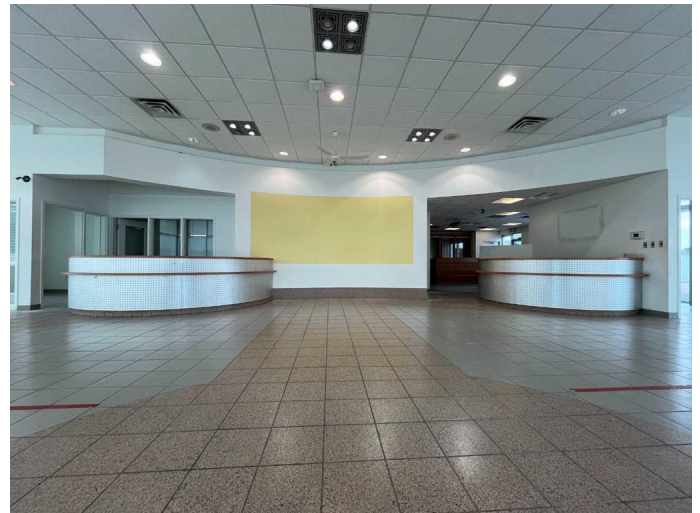
Built in 2005

## Essential Information

|            |             |
|------------|-------------|
| MLS® #     | A2167935    |
| Price      | \$1,800,000 |
| Bathrooms  | 0.00        |
| Acres      | 2.06        |
| Year Built | 2005        |
| Type       | Commercial  |
| Sub-Type   | Retail      |
| Status     | Active      |

## Community Information

|             |                       |
|-------------|-----------------------|
| Address     | 1450 Strachan Road Se |
| Subdivision | Southland             |
| City        | Medicine Hat          |
| County      | Medicine Hat          |
| Province    | Alberta               |
| Postal Code | T1B4V2                |



**Additional Information**

|                |                      |
|----------------|----------------------|
| Date Listed    | September 23rd, 2024 |
| Days on Market | 295                  |
| Zoning         | C-H                  |

**Listing Details**

|                |              |
|----------------|--------------|
| Listing Office | AVISON YOUNG |
|----------------|--------------|

Data is supplied by Pillar 9â„¢ MLS® System. Pillar 9â„¢ is the owner of the copyright in its MLS® System. Data is deemed reliable but is not guaranteed accurate by Pillar 9â„¢. The trademarks MLS®, Multiple Listing Service® and the associated logos are owned by The Canadian Real Estate Association (CREA) and identify the quality of services provided by real estate professionals who are members of CREA. Used under license.