

\$750,000 - 101 Highway 564 Highway N, Rural Wheatland County

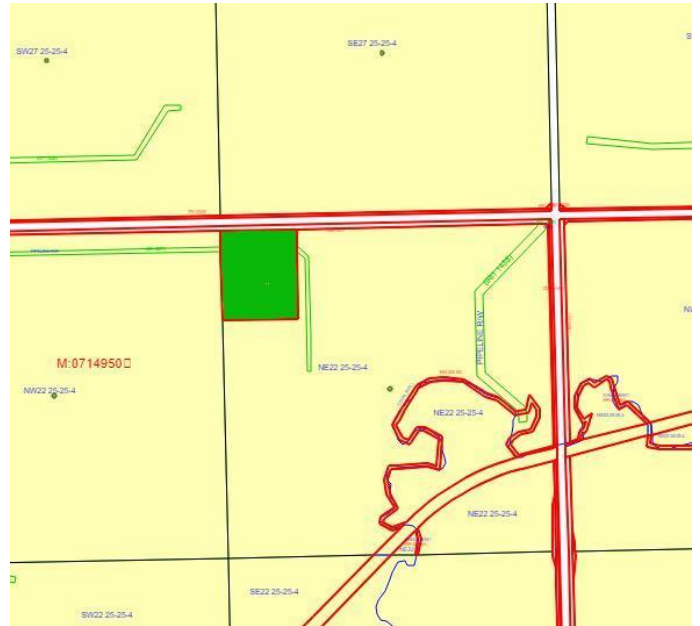
MLS® #A2174234

\$750,000

0 Bedroom, 0.00 Bathroom,
Commercial on 0.00 Acres

NONE, Rural Wheatland County, Alberta

10 ACRES INDUSTRIAL LAND located in Wheatland County North of Strathmore , undeveloped, zoning and subdivision complete. Highway access. No environmental concerns known. Ideal for trucking business and welding shop. Address that was used was 101 Highway 564 as there is no buildings and county has not assigned an address. Emergency address is 252041. Land south of this property also for sale.



Essential Information

MLS® #	A2174234
Price	\$750,000
Bathrooms	0.00
Acres	0.00
Type	Commercial
Sub-Type	Industrial
Status	Active

Community Information

Address	101 Highway 564 Highway N
Subdivision	NONE
City	Rural Wheatland County
County	Wheatland County
Province	Alberta
Postal Code	T1P0W1

Amenities

Amenities None

Additional Information

Date Listed October 19th, 2024
Days on Market 289
Zoning IG Industrial General

Listing Details

Listing Office RE/MAX Landan Real Estate

Data is supplied by Pillar 9â„ø MLSÂ® System. Pillar 9â„ø is the owner of the copyright in its MLSÂ® System. Data is deemed reliable but is not guaranteed accurate by Pillar 9â„ø. The trademarks MLSÂ®, Multiple Listing ServiceÂ® and the associated logos are owned by The Canadian Real Estate Association (CREA) and identify the quality of services provided by real estate professionals who are members of CREA. Used under license.