

# \$1,300,000 - 3419 36 Street N, Lethbridge

MLS® #A2176323

**\$1,300,000**

0 Bedroom, 0.00 Bathroom,  
Land on 5.00 Acres

Sherring Industrial Park, Lethbridge, Alberta

Great corner lot zoned I-H. The general area is set up for Heavy Industrial and is already adjacent to other Heavy Industrial. This is a good sized parcel that is basically ready for the next user. The lot is on a future rail spur so that is very appealing.

## Essential Information

|           |                 |
|-----------|-----------------|
| MLS® #    | A2176323        |
| Price     | \$1,300,000     |
| Bathrooms | 0.00            |
| Acres     | 5.00            |
| Type      | Land            |
| Sub-Type  | Industrial Land |
| Status    | Active          |

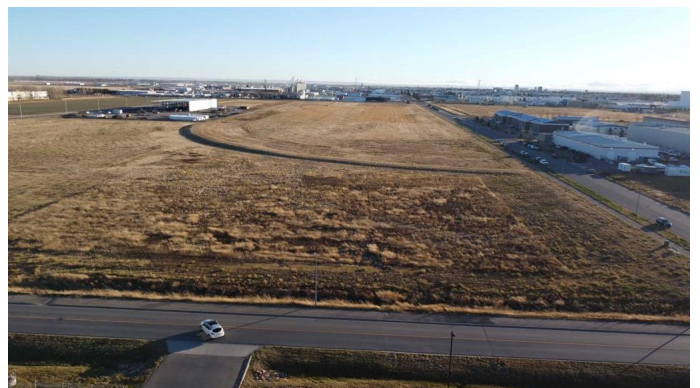
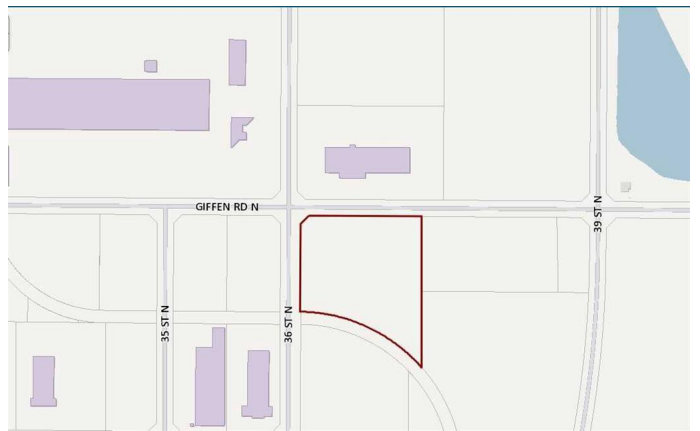
## Community Information

|             |                          |
|-------------|--------------------------|
| Address     | 3419 36 Street N         |
| Subdivision | Sherring Industrial Park |
| City        | Lethbridge               |
| County      | Lethbridge               |
| Province    | Alberta                  |
| Postal Code | T1H 5V9                  |

## Additional Information

|                |                    |
|----------------|--------------------|
| Date Listed    | November 5th, 2024 |
| Days on Market | 267                |
| Zoning         | I-H                |

## Listing Details



Data is supplied by Pillar 9â„¸ MLSÂ® System. Pillar 9â„¸ is the owner of the copyright in its MLSÂ® System. Data is deemed reliable but is not guaranteed accurate by Pillar 9â„¸. The trademarks MLSÂ®, Multiple Listing ServiceÂ® and the associated logos are owned by The Canadian Real Estate Association (CREA) and identify the quality of services provided by real estate professionals who are members of CREA. Used under license.