

\$1,288,000 - 10302 255 Street, Rural Parkland County

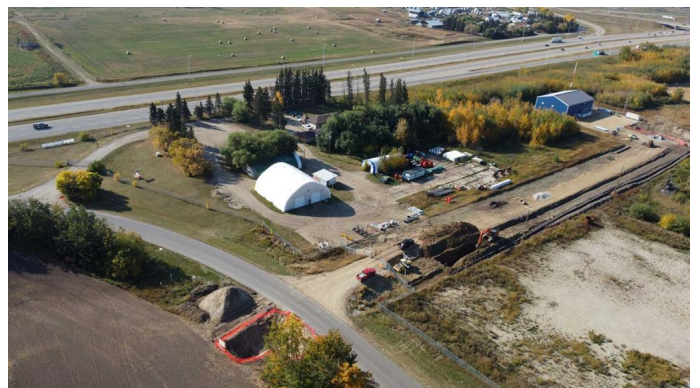
MLS® #A2181298

\$1,288,000

0 Bedroom, 0.00 Bathroom,
Land on 3.68 Acres

Acheson, Rural Parkland County, Alberta

Industrial land in Acheson with direct exposure to Highway 16A. Excellent access to three key transportation corridors - Highway 16A, Highway 16, and Highway 60. Improvements and realignment of Bevington Road & Pinchbeck Road are underway with completion slated for December 2024. Watermain extension to this area planned to commence Winter 2024/2025. Deferred Service Agreement in place (wastewater). Business Industrial Zoning allows for a variety of uses



Essential Information

MLS® #	A2181298
Price	\$1,288,000
Bathrooms	0.00
Acres	3.68
Type	Land
Sub-Type	Industrial Land
Status	Active

Community Information

Address	10302 255 Street
Subdivision	Acheson
City	Rural Parkland County
County	Parkland County
Province	Alberta
Postal Code	T7X 6B4

Additional Information

Date Listed	November 27th, 2024
Days on Market	235
Zoning	BI

Listing Details

Listing Office	CDN Global Advisors Ltd.
----------------	--------------------------

Data is supplied by Pillar 9â„¢ MLSÂ® System. Pillar 9â„¢ is the owner of the copyright in its MLSÂ® System. Data is deemed reliable but is not guaranteed accurate by Pillar 9â„¢. The trademarks MLSÂ®, Multiple Listing ServiceÂ® and the associated logos are owned by The Canadian Real Estate Association (CREA) and identify the quality of services provided by real estate professionals who are members of CREA. Used under license.