

# \$200,000 - 1101 1 Avenue, Wainwright

MLS® #A2189261

**\$200,000**

0 Bedroom, 0.00 Bathroom,  
Commercial on 1.12 Acres

Wainwright, Wainwright, Alberta

1.12 Acres in Wainwright with 960 Sq. Ft.  
Office building. Lot is fully fenced with parking  
in front of office space.

## Essential Information

|           |            |
|-----------|------------|
| MLS® #    | A2189261   |
| Price     | \$200,000  |
| Bathrooms | 0.00       |
| Acres     | 1.12       |
| Type      | Commercial |
| Sub-Type  | Mixed Use  |
| Status    | Active     |

## Community Information

|             |                            |
|-------------|----------------------------|
| Address     | 1101 1 Avenue              |
| Subdivision | Wainwright                 |
| City        | Wainwright                 |
| County      | Wainwright No. 61, M.D. of |
| Province    | Alberta                    |
| Postal Code | T9W 1G9                    |

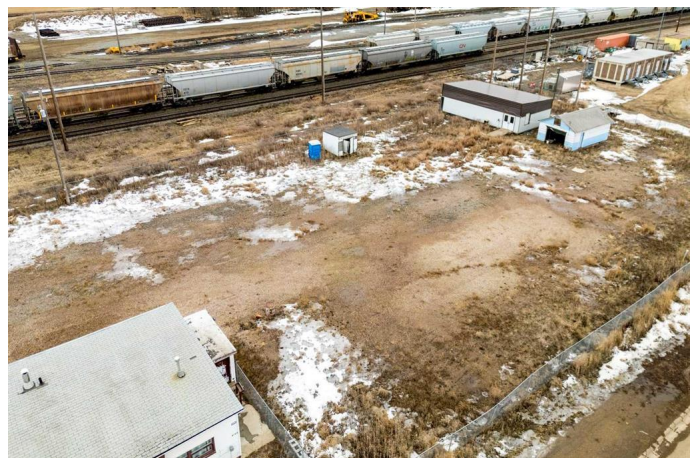
## Interior

|         |               |
|---------|---------------|
| Heating | Floor Furnace |
| Cooling | None          |

## Exterior

|                 |                           |
|-----------------|---------------------------|
| Lot Description | Low Maintenance Landscape |
|-----------------|---------------------------|

## Additional Information



|                |                    |
|----------------|--------------------|
| Date Listed    | January 21st, 2025 |
| Days on Market | 193                |
| Zoning         | C2                 |

## **Listing Details**

|                |                           |
|----------------|---------------------------|
| Listing Office | CENTURY 21 CONNECT REALTY |
|----------------|---------------------------|

Data is supplied by Pillar 9â„¢ MLSÂ® System. Pillar 9â„¢ is the owner of the copyright in its MLSÂ® System. Data is deemed reliable but is not guaranteed accurate by Pillar 9â„¢. The trademarks MLSÂ®, Multiple Listing ServiceÂ® and the associated logos are owned by The Canadian Real Estate Association (CREA) and identify the quality of services provided by real estate professionals who are members of CREA. Used under license.