

# \$375,000 - 161008 1315 Drive W, Rural Foothills County

MLS® #A2191419

**\$375,000**

0 Bedroom, 0.00 Bathroom,  
Land on 4.05 Acres

NONE, Rural Foothills County, Alberta

Just over 4ac with new road leading to building site plateau nestled in evergreens. Perfect spot only 15 min from Calgary. Electricity at property line and natural gas close by. Build your dream home. Most affordable acreage for miles.



## Essential Information

MLS® #	A2191419
Price	\$375,000
Bathrooms	0.00
Acres	4.05
Type	Land
Sub-Type	Residential Land
Status	Active

## Community Information

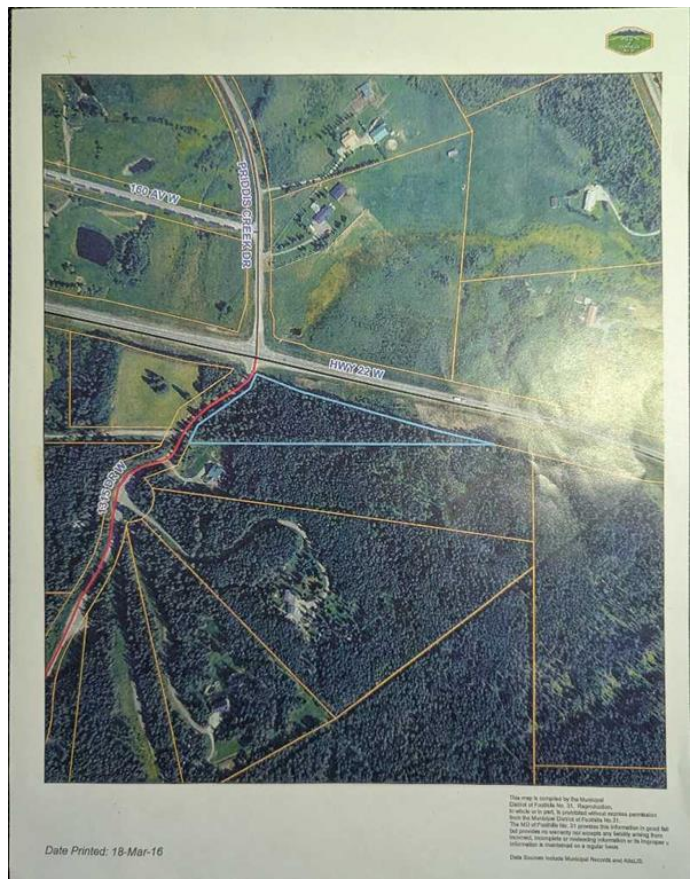
Address	161008 1315 Drive W
Subdivision	NONE
City	Rural Foothills County
County	Foothills County
Province	Alberta
Postal Code	T0L1W0

## Amenities

Utilities	Electricity at Lot Line
-----------	-------------------------

## Additional Information

Date Listed	January 30th, 2025
-------------	--------------------



Days on Market	92
Zoning	CR

**Listing Details**

Listing Office	CIR Realty
----------------	------------

Data is supplied by Pillar 9â„¢ MLS® System. Pillar 9â„¢ is the owner of the copyright in its MLS® System. Data is deemed reliable but is not guaranteed accurate by Pillar 9â„¢. The trademarks MLS®, Multiple Listing Service® and the associated logos are owned by The Canadian Real Estate Association (CREA) and identify the quality of services provided by real estate professionals who are members of CREA. Used under license.