

\$79,000 - 221 Heritage Drive, Fort McMurray

MLS® #A2191948

\$79,000

0 Bedroom, 0.00 Bathroom,
Land on 0.08 Acres

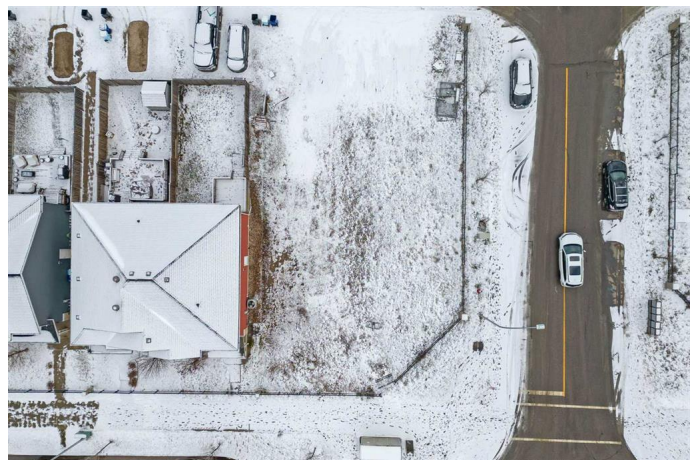
Parsons North, Fort McMurray, Alberta

Create Your Dream Home on this Corner Lot!

Situated in the picturesque Parson's Creek, this vacant lot is a canvas for your vision. Enjoy the convenience of being close to schools and scenic walking trails in the newest section of Fort McMurray. A short drive will take you to all essential amenities, making this location incredibly desirable.

With the added advantage of rear lane access, there's ample space for constructing a garage to complement your future home. Don't let this exceptional opportunity slip through your fingers!

Seize this chance to turn your dream home into a reality! Seller is a licensed real estate agent in the province of Alberta. Floor plans are available for serious buyers.



Essential Information

| | |
|-----------|------------------|
| MLS® # | A2191948 |
| Price | \$79,000 |
| Bathrooms | 0.00 |
| Acres | 0.08 |
| Type | Land |
| Sub-Type | Residential Land |
| Status | Active |

Community Information

| | |
|-------------|--------------------|
| Address | 221 Heritage Drive |
| Subdivision | Parsons North |
| City | Fort McMurray |
| County | Wood Buffalo |
| Province | Alberta |
| Postal Code | T9K 0X9 |

Additional Information

| | |
|----------------|--------------------|
| Date Listed | February 3rd, 2025 |
| Days on Market | 136 |
| Zoning | ND |

Listing Details

| | |
|----------------|----------------|
| Listing Office | RE/MAX Connect |
|----------------|----------------|

Data is supplied by Pillar 9â„¢ MLSÂ® System. Pillar 9â„¢ is the owner of the copyright in its MLSÂ® System. Data is deemed reliable but is not guaranteed accurate by Pillar 9â„¢. The trademarks MLSÂ®, Multiple Listing ServiceÂ® and the associated logos are owned by The Canadian Real Estate Association (CREA) and identify the quality of services provided by real estate professionals who are members of CREA. Used under license.