

\$820,000 - Ne 24 59 12 W5 Hilltop Subdivision, Whitecourt

MLS® #A2196351

\$820,000

0 Bedroom, 0.00 Bathroom,
Land on 7.04 Acres

NONE, Whitecourt, Alberta

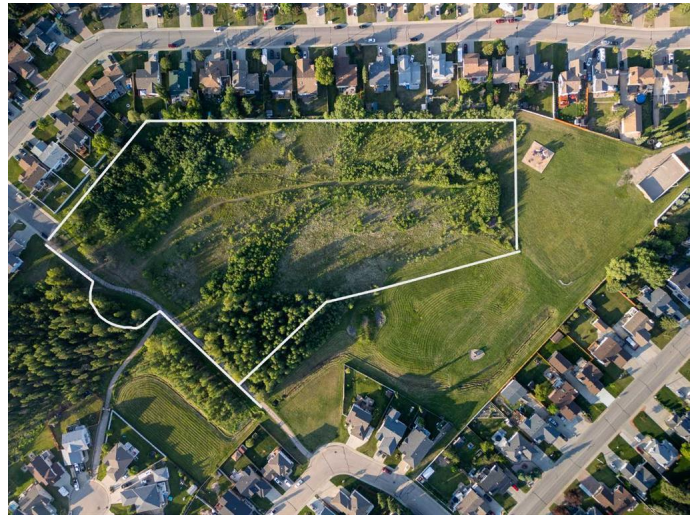
7.04 acres of prime cleared and leveled Residential Development Land for sale with services to the lot line.

It is one of the nicest and most desirable locations for residential development in Whitecourt. Homes on the Hill have always been in high demand and a new subdivision, the first in over 10 years would be no exception.

This newly proposed subdivision consists of 25 beautifully spacious Single Family lots all on a quiet cul de sac.

With so much of the engineering completed and many of the necessary town approvals in place, this subdivision will definitely save you a lot in both time and money.

Alternatively, the raw land would be perfect for a possible adult living community. Or you could design a larger 40-50 lot subdivision if so desired. The opportunities for this beautiful upper Whitecourt parcel are endless.



Essential Information

MLS® #	A2196351
Price	\$820,000
Bathrooms	0.00
Acres	7.04

Type	Land
Sub-Type	Residential Land
Status	Active

Community Information

Address	Ne 24 59 12 W5 Hilltop Subdivision
Subdivision	NONE
City	Whitecourt
County	Woodlands County
Province	Alberta
Postal Code	T7S 1H5

School Information

District	Living Waters Catholic Regional Division No. 42
----------	---

Additional Information

Date Listed	February 21st, 2025
Days on Market	165
Zoning	R-1B

Listing Details

Listing Office	RE/MAX ADVANTAGE (WHITECOURT)
----------------	-------------------------------

Data is supplied by Pillar 9â„¢ MLSÂ® System. Pillar 9â„¢ is the owner of the copyright in its MLSÂ® System. Data is deemed reliable but is not guaranteed accurate by Pillar 9â„¢. The trademarks MLSÂ®, Multiple Listing ServiceÂ® and the associated logos are owned by The Canadian Real Estate Association (CREA) and identify the quality of services provided by real estate professionals who are members of CREA. Used under license.