

\$1,450,000 - 20 Cranna Lake Drive, Lacombe

MLS® #A2196977

\$1,450,000

0 Bedroom, 0.00 Bathroom,
Land on 22.71 Acres

None, Lacombe, Alberta

What is your vision for this stunningly beautiful 22.71 acre property in the heart of the City of Lacombe? The land offers wonderful, year-round views of Lake Anne, Elizabeth Lake, Burman University, and the surrounding natural area. It is amazing to think that all of Lacombe and Burman's amenities are nearby when stepping foot onto this secluded and peaceful parcel.

Essential Information

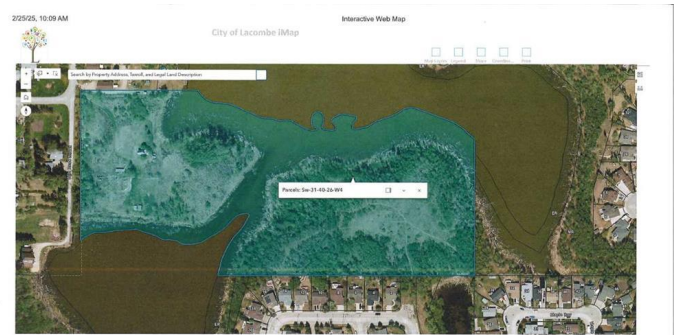
MLS® #	A2196977
Price	\$1,450,000
Bathrooms	0.00
Acres	22.71
Type	Land
Sub-Type	Residential Land
Status	Active

Community Information

Address	20 Cranna Lake Drive
Subdivision	None
City	Lacombe
County	Lacombe
Province	Alberta
Postal Code	T4L 1S5

Exterior

Lot Description	Native Plants, Views, Wooded, Wetlands
-----------------	--



Additional Information

Date Listed February 25th, 2025

Days on Market 68

Zoning FD

Listing Details

Listing Office Royal LePage Lifestyles Realty

Data is supplied by Pillar 9â„¸ MLSÂ® System. Pillar 9â„¸ is the owner of the copyright in its MLSÂ® System. Data is deemed reliable but is not guaranteed accurate by Pillar 9â„¸. The trademarks MLSÂ®, Multiple Listing ServiceÂ® and the associated logos are owned by The Canadian Real Estate Association (CREA) and identify the quality of services provided by real estate professionals who are members of CREA. Used under license.