

\$246,800 - 20, 9 Leedy Drive, Whitecourt

MLS® #A2198515

\$246,800

3 Bedroom, 2.00 Bathroom, 810 sqft

Residential on 0.07 Acres

NONE, Whitecourt, Alberta

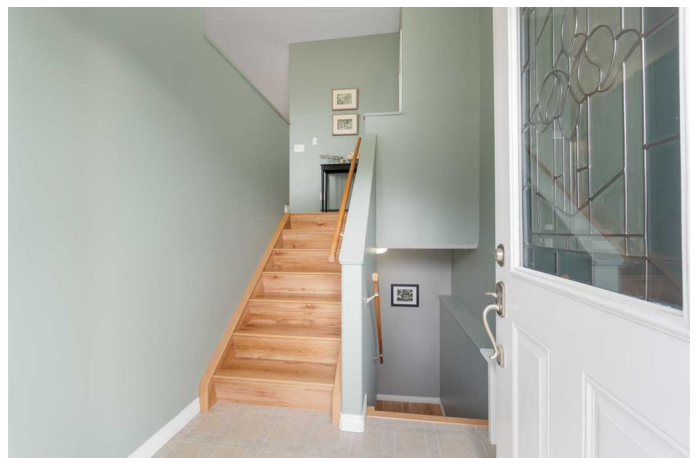
Stunning 3-Bedroom Executive Bareland Condo in Willowstone Place, Whitecourt. This beautifully designed executive bareland condo offers the perfect balance of space, style, and convenience!

The main floor features an open-concept layout with a spacious kitchen, pantry, and large dining area, ideal for entertaining. Solid wood cabinets, 9ft ceilings, large counter space, and stainless appliances. The front living room provides a welcoming space to relax, while the main floor primary bedroom offers privacy with a 3 piece walk through ensuite.

Downstairs, youâ€™™ find two additional bedrooms, a large family room, laundry, and plenty of storageâ€™™perfect for guests, family, or a home office setup. The basement in-floor heat is a luxury you will love. Carpets only in the bedrooms.

Step outside to enjoy your fully fenced private backyard, offering a quiet retreat for outdoor living.

With two bathrooms, ample storage, and a fantastic floor plan, this home is perfect for those seeking a low-maintenance lifestyle without compromising on space.



Built in 2006

Essential Information

MLS® #	A2198515
Price	\$246,800
Bedrooms	3
Bathrooms	2.00
Full Baths	2
Square Footage	810
Acres	0.07
Year Built	2006
Type	Residential
Sub-Type	Row/Townhouse
Style	Bungalow
Status	Active

Community Information

Address	20, 9 Leedy Drive
Subdivision	NONE
City	Whitecourt
County	Woodlands County
Province	Alberta
Postal Code	T7S 1X2

Amenities

Amenities	None
Parking Spaces	2
Parking	Off Street

Interior

Interior Features	High Ceilings, No Smoking Home, Open Floorplan, Pantry, Vinyl Windows, Walk-In Closet(s)
Appliances	Dishwasher, Dryer, Electric Range, Microwave, Refrigerator, Washer
Heating	In Floor, Forced Air, Natural Gas, High Efficiency
Cooling	None
Has Basement	Yes
Basement	Finished, Full

Exterior

Exterior Features	Private Yard
Lot Description	Back Yard, Level, Low Maintenance Landscape
Roof	Asphalt Shingle

Construction	Stucco
Foundation	Poured Concrete

Additional Information

Date Listed	March 4th, 2025
Days on Market	63
Zoning	R3

Listing Details

Listing Office	ROYAL LEPAGE MODERN REALTY
----------------	----------------------------

Data is supplied by Pillar 9â„¢ MLS® System. Pillar 9â„¢ is the owner of the copyright in its MLS® System. Data is deemed reliable but is not guaranteed accurate by Pillar 9â„¢. The trademarks MLS®, Multiple Listing Service® and the associated logos are owned by The Canadian Real Estate Association (CREA) and identify the quality of services provided by real estate professionals who are members of CREA. Used under license.