

\$1,450,000 - 137 Second Avenue, Strathmore

MLS® #A2201716

\$1,450,000

0 Bedroom, 0.00 Bathroom,
Commercial on 0.00 Acres

Downtown_Strathmore, Strathmore, Alberta

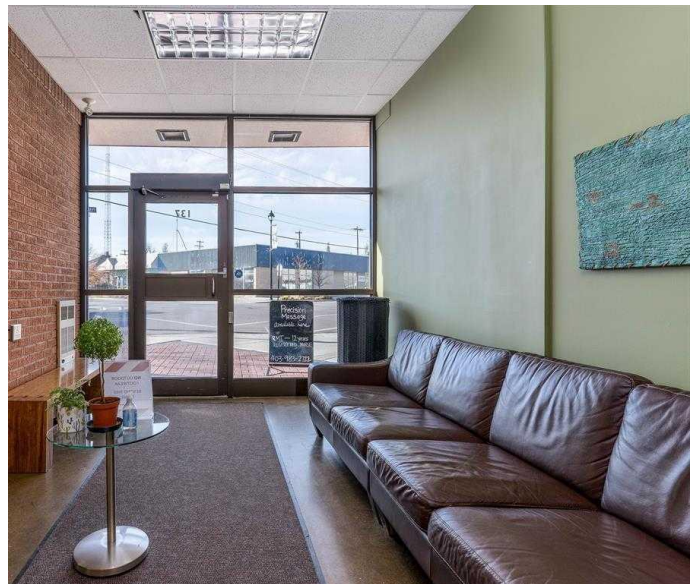
One of the nicest buildings in downtown Strathmore. Former ATB Financial Services Branch office located on busy Second Avenue and Second Street in downtown Strathmore. Currently operated as a fitness centre with fully trained business owners.. Two fitness rooms with weight equipment a yoga studio with a floating hardwood floor and floor to ceiling mirrors. Two physio rooms and mail and female bathrooms complete with showers and secure lockers and a laundry area with new front load washer and dryer. It doesn't get any better than this. A turnkey business opportunity for the fitness aspired. A great investment opportunity for an investor in a building that has been meticulously maintained over the years. Needs Nothing. Purchase and enjoy the rewards.

Built in 1981

Essential Information

MLS® #	A2201716
Price	\$1,450,000
Bathrooms	0.00
Acres	0.00
Year Built	1981
Type	Commercial
Sub-Type	Mixed Use
Status	Active

Community Information



Address	137 Second Avenue
Subdivision	Downtown_Strathmore
City	Strathmore
County	Wheatland County
Province	Alberta
Postal Code	T1P 1K2

Amenities

Parking Spaces	5
----------------	---

Interior

Heating	Make-up Air, Natural Gas
Cooling	Full

Exterior

Roof	Asphalt/Gravel
Construction	Brick, Concrete
Foundation	Poured Concrete

Additional Information

Date Listed	March 12th, 2025
Days on Market	143
Zoning	CB

Listing Details

Listing Office	CIR Realty
----------------	------------

Data is supplied by Pillar 9â„¢ MLSÂ® System. Pillar 9â„¢ is the owner of the copyright in its MLSÂ® System. Data is deemed reliable but is not guaranteed accurate by Pillar 9â„¢. The trademarks MLSÂ®, Multiple Listing ServiceÂ® and the associated logos are owned by The Canadian Real Estate Association (CREA) and identify the quality of services provided by real estate professionals who are members of CREA. Used under license.