

\$114,900 - Block 2 Lot 1 Eastwood Ridge Estates, Rural Woodlands County

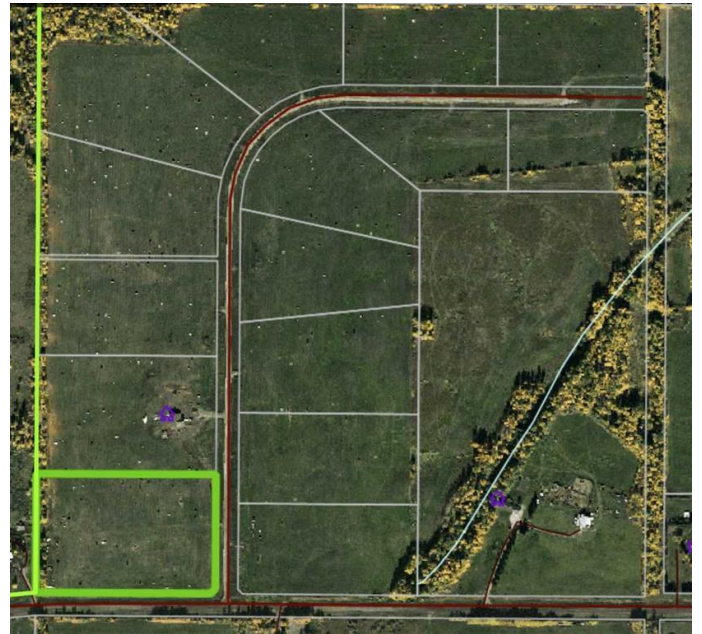
MLS® #A2204809

\$114,900

0 Bedroom, 0.00 Bathroom,
Land on 9.24 Acres

NONE, Rural Woodlands County, Alberta

Lovely location just off the pavement east of Whitecourt. These lots range from 5 acres to 10.9 acres. Use your own developer to build your dream home. Lots have very good views, excellent roads, gas and power to the property lines, and good water in the area. GST included in the list price



Essential Information

MLS® #	A2204809
Price	\$114,900
Bathrooms	0.00
Acres	9.24
Type	Land
Sub-Type	Residential Land
Status	Active



Community Information

Address	Block 2 Lot 1 Eastwood Ridg
Subdivision	NONE
City	Rural Woodlands County
County	Woodlands County
Province	Alberta
Postal Code	T7S 1N5



Amenities

Utilities Electricity at Lot Line, Natural Gas at Lot Line

Additional Information

Date Listed March 22nd, 2025

Days on Market 234

Zoning CR

Listing Details

Listing Office RE/MAX ADVANTAGE (WHITECOURT)

Data is supplied by Pillar 9â,,ç MLSÂ® System. Pillar 9â,,ç is the owner of the copyright in its MLSÂ® System. Data is deemed reliable but is not guaranteed accurate by Pillar 9â,,ç. The trademarks MLSÂ®, Multiple Listing ServiceÂ® and the associated logos are owned by The Canadian Real Estate Association (CREA) and identify the quality of services provided by real estate professionals who are members of CREA. Used under license.