

\$205,000 - 295 Muirfield Crescent, Lyalta

MLS® #A2214715

\$205,000

0 Bedroom, 0.00 Bathroom,
Land on 0.15 Acres

Lakes of Muirfield, Lyalta, Alberta

A beautiful WALK OUT lot with 56 ft across the front so you can easily build a 3 car garage and your perfect home with lots of yard to enjoy. Backing on to the canal, so giving you a nice backyard and then stunning views of the sunsets. This lot is fully serviced and situated in a golf course community only 20 minutes from Calgary, Airdrie and Chestermere. Build your dream home today and no building commitment!!!!

Essential Information

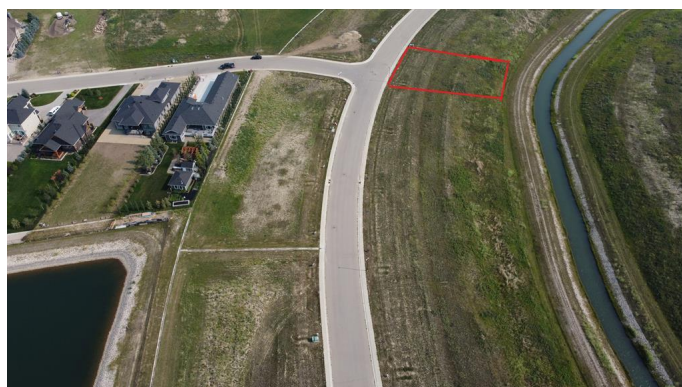
| | |
|-----------|------------------|
| MLS® # | A2214715 |
| Price | \$205,000 |
| Bathrooms | 0.00 |
| Acres | 0.15 |
| Type | Land |
| Sub-Type | Residential Land |
| Status | Active |

Community Information

| | |
|-------------|------------------------|
| Address | 295 Muirfield Crescent |
| Subdivision | Lakes of Muirfield |
| City | Lyalta |
| County | Wheatland County |
| Province | Alberta |
| Postal Code | T0J 1Y1 |

Amenities

| | |
|-----------|--|
| Amenities | Clubhouse, Golf Course, Playground, Park |
|-----------|--|



Exterior

Lot Description Backs on to Park/Green Space, Creek/River/Stream/Pond

Additional Information

Date Listed April 25th, 2025
Days on Market 100
Zoning R-1
HOA Fees 85
HOA Fees Freq. MON

Listing Details

Listing Office Royal LePage Benchmark

Data is supplied by Pillar 9â„¢ MLS® System. Pillar 9â„¢ is the owner of the copyright in its MLS® System. Data is deemed reliable but is not guaranteed accurate by Pillar 9â„¢. The trademarks MLS®, Multiple Listing Service® and the associated logos are owned by The Canadian Real Estate Association (CREA) and identify the quality of services provided by real estate professionals who are members of CREA. Used under license.