

\$339,900 - 2639 22 Avenue S, Lethbridge

MLS® #A2217659

\$339,900

4 Bedroom, 2.00 Bathroom, 1,040 sqft

Residential on 0.13 Acres

Agnes Davidson, Lethbridge, Alberta

BE FIRST IN LINE! This is a fine address to come home to. Extremely well-located southside bungalow with loads of potential! Just two blocks from Agnes Davidson School, and within short walking distance to playgrounds, coulees, restaurants, shopping and groceries. A total of 4 bedrooms, 2 bathrooms, vaulted open beam living room, single detached garage, mature yard and covered patio for summer relaxing.

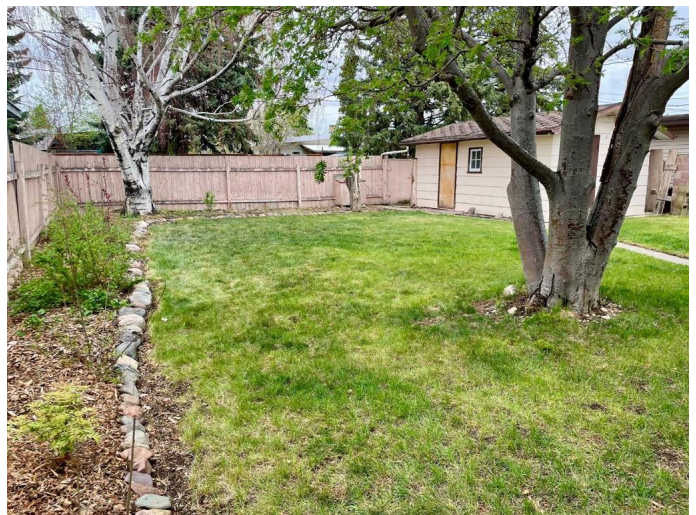
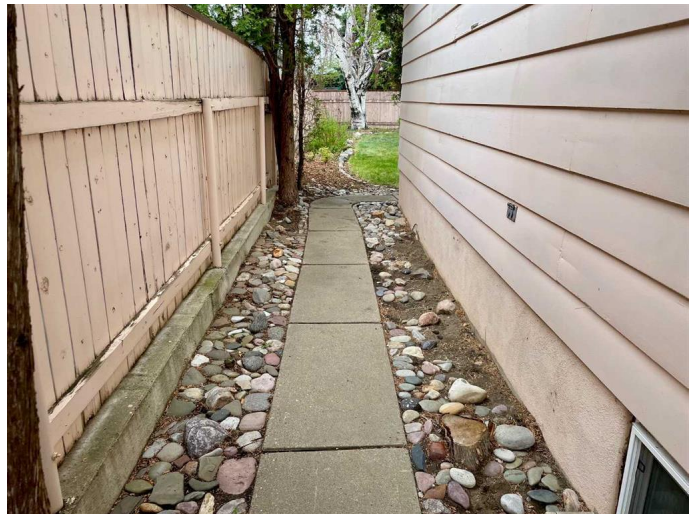
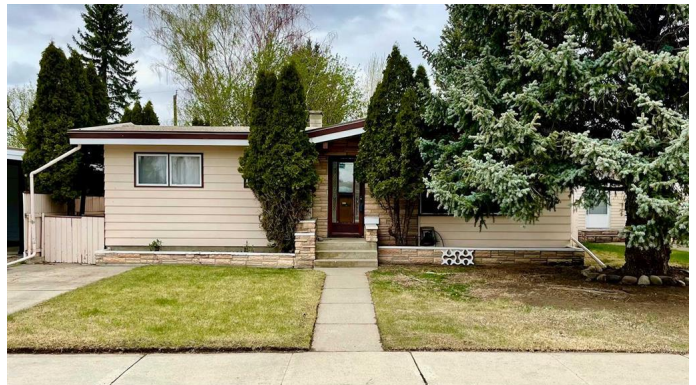
Built in 1962

Essential Information

MLS® #	A2217659
Price	\$339,900
Bedrooms	4
Bathrooms	2.00
Full Baths	2
Square Footage	1,040
Acres	0.13
Year Built	1962
Type	Residential
Sub-Type	Detached
Style	Bungalow
Status	Active

Community Information

Address	2639 22 Avenue S
Subdivision	Agnes Davidson



City	Lethbridge
County	Lethbridge
Province	Alberta
Postal Code	T1K 1J8

Amenities

Parking Spaces	3
Parking	Single Garage Detached
# of Garages	1

Interior

Interior Features	Vaulted Ceiling(s), Beamed Ceilings
Appliances	Dryer, Freezer, Gas Stove, Refrigerator, Washer, Window Coverings
Heating	Forced Air
Cooling	None
Has Basement	Yes
Basement	Finished, Full

Exterior

Exterior Features	Private Yard
Lot Description	Back Lane, Back Yard, Landscaped, Standard Shaped Lot, Wooded
Roof	Tar/Gravel
Construction	Brick, Wood Siding
Foundation	Poured Concrete

Additional Information

Date Listed	May 5th, 2025
Days on Market	2
Zoning	R-L

Listing Details

Listing Office	SUTTON GROUP - LETHBRIDGE
----------------	---------------------------

Data is supplied by Pillar 9â„¢ MLS® System. Pillar 9â„¢ is the owner of the copyright in its MLS® System. Data is deemed reliable but is not guaranteed accurate by Pillar 9â„¢. The trademarks MLS®, Multiple Listing Service® and the associated logos are owned by The Canadian Real Estate Association (CREA) and identify the quality of services provided by real estate professionals who are members of CREA. Used under license.