

\$474,900 - 31 Eldridge Crescent, Red Deer

MLS® #A2217793

\$474,900

4 Bedroom, 4.00 Bathroom, 1,567 sqft

Residential on 0.13 Acres

Eastview, Red Deer, Alberta

Spacious family home on a quiet crescent! This 2 storey family home offers a functional layout with room to grow, featuring a large living area, basement flex room currently optimized for a gym but also perfect for an office, and a beautiful sunroom filled with natural light. Nestled in a mature, family-friendly neighborhood close to parks, schools, and amenities. A must-see for buyers seeking space, comfort, and a peaceful location!

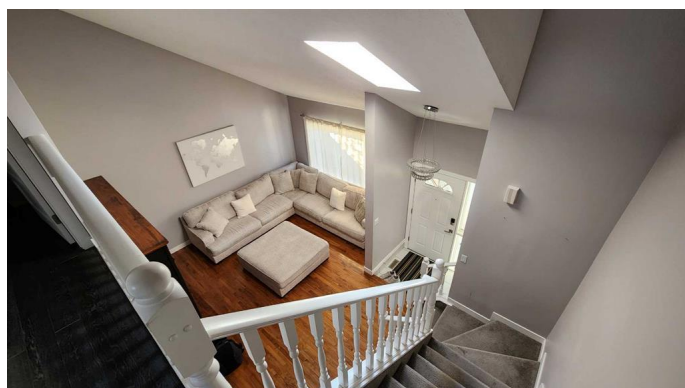
Built in 1987

Essential Information

MLS® #	A2217793
Price	\$474,900
Bedrooms	4
Bathrooms	4.00
Full Baths	3
Half Baths	1
Square Footage	1,567
Acres	0.13
Year Built	1987
Type	Residential
Sub-Type	Detached
Style	2 Storey
Status	Active

Community Information

Address 31 Eldridge Crescent



Subdivision	Eastview
City	Red Deer
County	Red Deer
Province	Alberta
Postal Code	T4R 2C9

Amenities

Parking Spaces	4
Parking	Double Garage Attached
# of Garages	2

Interior

Interior Features	See Remarks
Appliances	Dishwasher, Refrigerator, See Remarks, Washer/Dryer, Oven
Heating	Forced Air, Natural Gas
Cooling	None
Fireplace	Yes
# of Fireplaces	1
Fireplaces	Wood Burning
Has Basement	Yes
Basement	Finished, Full

Exterior

Exterior Features	Garden, Other
Lot Description	Back Lane, Back Yard, City Lot, Garden, Landscaped, Other, See Remarks
Roof	Asphalt Shingle
Construction	See Remarks
Foundation	Wood, Other

Additional Information

Date Listed	May 5th, 2025
Zoning	R1

Listing Details

Listing Office	Royal LePage Benchmark
----------------	------------------------

Data is supplied by Pillar 9â„¢ MLS® System. Pillar 9â„¢ is the owner of the copyright in its MLS® System. Data is deemed reliable but is not guaranteed accurate by Pillar 9â„¢. The trademarks MLS®, Multiple Listing Service® and the associated logos are owned by The Canadian Real Estate Association (CREA) and identify the quality of services provided by real estate professionals who are members of CREA. Used under license.