

# \$579,900 - 32 Iron Wolf Court, Lacombe

MLS® #A2218428

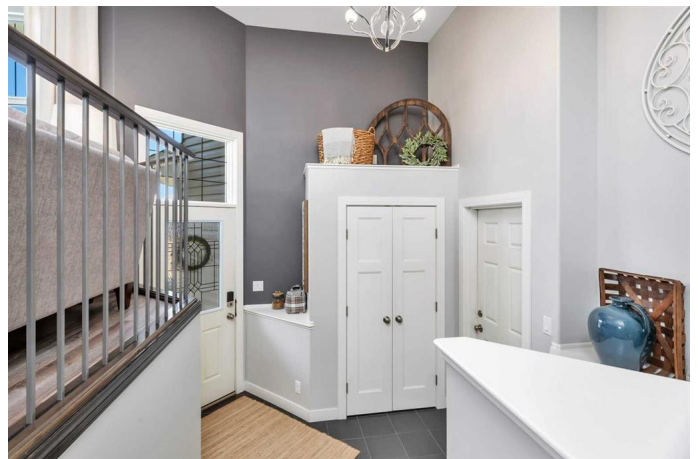
**\$579,900**

4 Bedroom, 3.00 Bathroom, 1,338 sqft

Residential on 0.14 Acres

Iron Wolf, Lacombe, Alberta

Gorgeous custom bi-level on a back south facing pie lot with wide open space behind you. Welcome to quiet and secluded Iron Wolf Court. This home has beautiful curb appeal with a lovely sunny deck. This spacious open floor plan bilevel has so much to offer; The main floor is stunning with rich laminate, bright white trim and 9 CEILINGS. Freshly painted, this room is bright and beautiful. The living room offers a nice entertaining space and plenty of WINDOWS for soft natural light. The kitchen is the focal point with a gorgeous, freshly painted, coffered ceiling, RICH maple cabinets with so much storage, a GAS STOVE, an expansive island AND a walk-in pantry all overlooking the pretty SOUTH FACING DECK. The bedrooms are tucked down the hall; The Primary Suite is so pretty & spacious with thick plush carpet and tall south facing windows, a 3 piece ensuite with TWO SINKS, and a shower. The HUGE walk in closet is kept airy and bright with a transom window. There is also another good sized bedroom and a full 4 piece bath on this floor. The basement is SPACIOUS & BRIGHT, with two good sized bedrooms and another 4 piece bath. There is a MASSIVE family room with cozy carpeting and big windows to keep it bright. There is also a stunning movie/ media room with a WET BAR and a shiplap feature wall and another big window. There is a spacious mechanical room housing the washer and dryer with cabinets and a folding counter and additional shelving for storage and extra



pantry items. The basement is also plumbed for in-floor heat. This home has a number of storage closets both up & down, so there are plenty of places for all your home STUFF. The HEATED oversized garage w / 2 DOORS has room for TWO FULL SIZED vehicles, and additional storage or work space. Saving the BEST FOR LAST; The beautiful SOUTH FACING expansive YARD is anchored by TWO decks. This 6100+ Square foot immaculate yard is fully fenced and backs onto government research land; NO NEIGHBOURS behind you and views for DAYS. There is both an upper and lower deck, a fullyÂ fenced yard with an RV Gate and under deck storage. Move in ready with so many extras, this is a great place to call home!Â

Built in 2013

### **Essential Information**

MLS® #	A2218428
Price	\$579,900
Bedrooms	4
Bathrooms	3.00
Full Baths	3
Square Footage	1,338
Acres	0.14
Year Built	2013
Type	Residential
Sub-Type	Detached
Style	Bi-Level
Status	Active

### **Community Information**

Address	32 Iron Wolf Court
Subdivision	Iron Wolf
City	Lacombe
County	Lacombe
Province	Alberta

Postal Code T4L 0E9

### Amenities

Utilities Electricity Connected, Natural Gas Connected, Sewer Connected, Water Connected, Garbage Collection

Parking Spaces 2

Parking Concrete Driveway, Double Garage Attached

# of Garages 2

### Interior

Interior Features Central Vacuum, Closet Organizers, Kitchen Island, No Smoking Home, Open Floorplan, Pantry, Vinyl Windows, Walk-In Closet(s)

Appliances Dishwasher, Microwave, Refrigerator, Stove(s), Washer/Dryer

Heating Forced Air, Natural Gas

Cooling None

Has Basement Yes

Basement Finished, Full

### Exterior

Exterior Features None

Lot Description Backs on to Park/Green Space, Irregular Lot, Landscaped, Lawn, Low Maintenance Landscape, No Neighbours Behind, Pie Shaped Lot, Views

Roof Asphalt Shingle

Construction Vinyl Siding, Wood Frame

Foundation Poured Concrete

### Additional Information

Date Listed May 9th, 2025

Days on Market 5

Zoning R1

### Listing Details

Listing Office Royal LePage Network Realty Corp.

Data is supplied by Pillar 9â„¢ MLSÂ® System. Pillar 9â„¢ is the owner of the copyright in its MLSÂ® System. Data is deemed reliable but is not guaranteed accurate by Pillar 9â„¢. The trademarks MLSÂ®, Multiple Listing ServiceÂ® and the associated logos are owned by The Canadian Real Estate Association (CREA) and identify the quality of services provided by real estate professionals who are members of CREA. Used under license.