

# \$79,000 - 115, 16326 Twp Rd 675, Plamondon

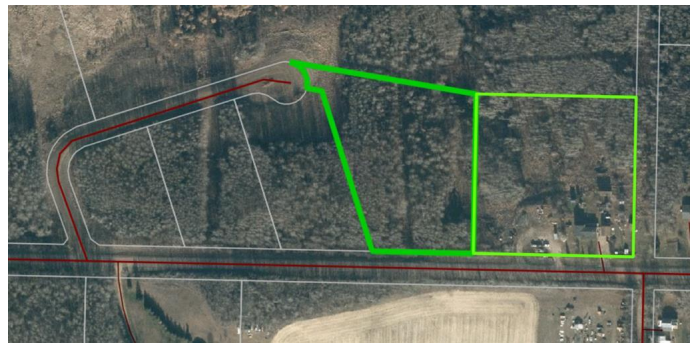
MLS® #A2219230

**\$79,000**

0 Bedroom, 0.00 Bathroom,  
Land on 4.91 Acres

NONE, Plamondon, Alberta

Here is a hidden gem, a great spot to park your RV and maybe built a home later (4.91 Acres). There are two lots for sale in this area which as of date is undeveloped. There are four lots here on a no exit road. So lots of privacy and nothing but unobstructed views of a valley with great sun sets. These lots have a gentle slope, but at the base of the lot there is plenty of room to put a few RV's and use it recreationally for now. Look around, this price is really really good! Gas at the property line, power is close, just across the road.



## Essential Information

MLS® #	A2219230
Price	\$79,000
Bathrooms	0.00
Acres	4.91
Type	Land
Sub-Type	Residential Land
Status	Active

## Community Information

Address	115, 16326 Twp Rd 675
Subdivision	NONE
City	Plamondon
County	Lac La Biche County
Province	Alberta
Postal Code	T0A 2T0

**Amenities**

Utilities                      Electricity Available, Natural Gas at Lot Line

**Additional Information**

Date Listed                      May 8th, 2025  
Days on Market                1  
Zoning                              CR

**Listing Details**

Listing Office                   People 1st Realty

Data is supplied by Pillar 9â„¢ MLS® System. Pillar 9â„¢ is the owner of the copyright in its MLS® System. Data is deemed reliable but is not guaranteed accurate by Pillar 9â„¢. The trademarks MLS®, Multiple Listing Service® and the associated logos are owned by The Canadian Real Estate Association (CREA) and identify the quality of services provided by real estate professionals who are members of CREA. Used under license.