

# \$2,200 - 10250 85a Street, Grande Prairie

MLS® #A2220323

## \$2,200

3 Bedroom, 2.00 Bathroom, 1,172 sqft

Rental on 0.00 Acres

Crystal Landing, Grande Prairie, Alberta

3 bed 1.5 bath townhouse in Crystal Landing!  
Open concept living dining and kitchen area with a large island. Half bathroom located on the main floor. 3 bedrooms and 1 full bathroom located upstairs. Primary bedroom features dual closets and a walk-through to the bathroom. Fully fenced backyard with a shed. Unfinished basement. Single car attached garage is insulated and unheated. Utilities not included. Application required prior to viewing.  
Pet friendly with \$50/mo pet fee.

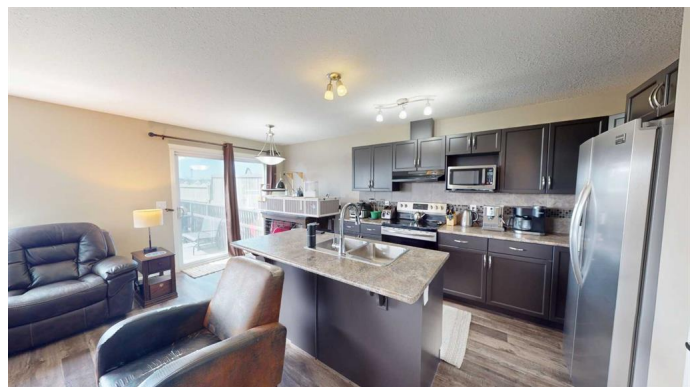
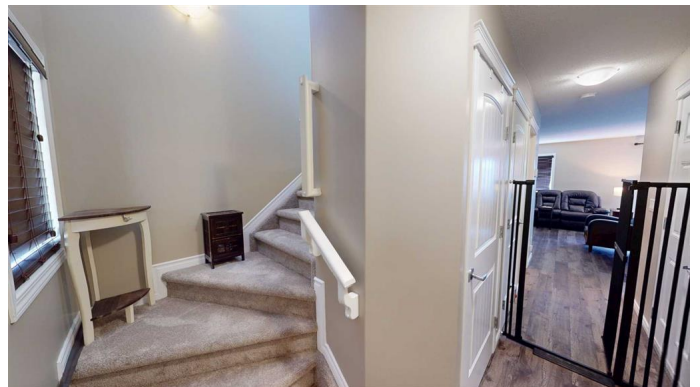


## Essential Information

MLS® #	A2220323
Price	\$2,200
Bedrooms	3
Bathrooms	2.00
Full Baths	1
Half Baths	1
Square Footage	1,172
Acres	0.00
Type	Rental
Status	Active

## Community Information

Address	10250 85a Street
Subdivision	Crystal Landing
City	Grande Prairie
County	Grande Prairie



Province	Alberta
Postal Code	T8X0K2

### Amenities

Parking	Single Garage Attached
---------	------------------------

### Interior

Appliances	Dishwasher, Microwave Hood Fan, Oven, Refrigerator, Stove(s), Washer/Dryer
------------	--

### Exterior

Roof	Asphalt Shingle
------	-----------------

### Additional Information

Date Listed	May 12th, 2025
-------------	----------------

Days on Market	1
----------------	---

### Listing Details

Listing Office	Grassroots Realty Group Ltd.
----------------	------------------------------

Data is supplied by Pillar 9â„¢ MLS® System. Pillar 9â„¢ is the owner of the copyright in its MLS® System. Data is deemed reliable but is not guaranteed accurate by Pillar 9â„¢. The trademarks MLS®, Multiple Listing Service® and the associated logos are owned by The Canadian Real Estate Association (CREA) and identify the quality of services provided by real estate professionals who are members of CREA. Used under license.