

# \$139,000 - 10313 103 St, Hythe

---

MLS® #A2221710

## \$139,000

3 Bedroom, 1.00 Bathroom, 816 sqft

Residential on 0.17 Acres

NONE, Hythe, Alberta

Here's a diamond in the rough. This old girl could use a bit of work, but has solid bones. 3 bedrooms, 1 bathroom upstairs. The basement is undeveloped. This home would make an affordable starter home or a property to add to your rental portfolio.

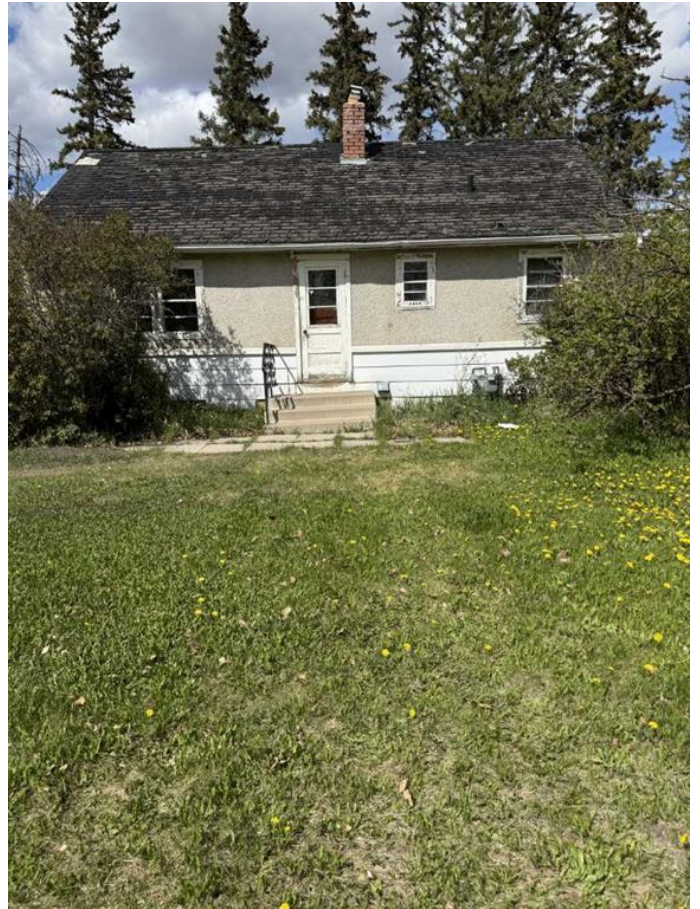
Built in 1960

### Essential Information

MLS® #	A2221710
Price	\$139,000
Bedrooms	3
Bathrooms	1.00
Full Baths	1
Square Footage	816
Acres	0.17
Year Built	1960
Type	Residential
Sub-Type	Detached
Style	Bungalow
Status	Active

### Community Information

Address	10313 103 St
Subdivision	NONE
City	Hythe
County	Grande Prairie No. 1, County of
Province	Alberta
Postal Code	T0H 2C0



## Amenities

Parking Spaces	3
Parking	Off Street

## Interior

Interior Features	See Remarks
Appliances	Other
Heating	Forced Air, Natural Gas
Cooling	None
Has Basement	Yes
Basement	Full, Unfinished

## Exterior

Exterior Features	None
Lot Description	Few Trees
Roof	Asphalt Shingle
Construction	Mixed
Foundation	Poured Concrete

## Additional Information

Date Listed	May 15th, 2025
Days on Market	1
Zoning	R-G

## Listing Details

Listing Office	RE/MAX Grande Prairie
----------------	-----------------------

Data is supplied by Pillar 9â„¢ MLSÂ® System. Pillar 9â„¢ is the owner of the copyright in its MLSÂ® System. Data is deemed reliable but is not guaranteed accurate by Pillar 9â„¢. The trademarks MLSÂ®, Multiple Listing ServiceÂ® and the associated logos are owned by The Canadian Real Estate Association (CREA) and identify the quality of services provided by real estate professionals who are members of CREA. Used under license.

