

\$75,000 - 101 Shalestone Way, Fort McMurray

MLS® #A2222336

\$75,000

0 Bedroom, 0.00 Bathroom,
Land on 0.09 Acres

Timberlea, Fort McMurray, Alberta

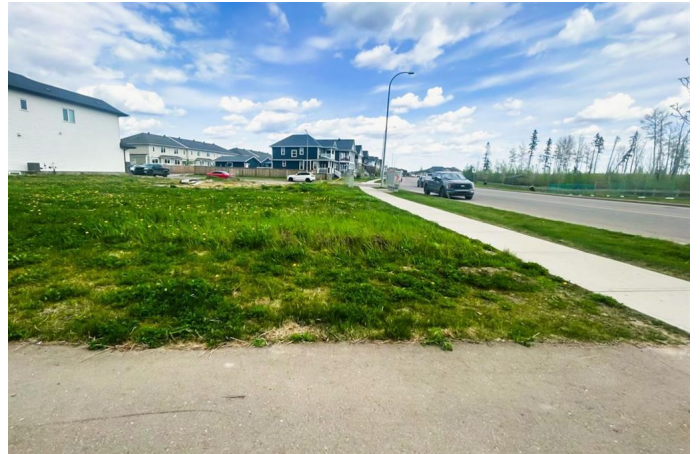
What a great opportunity to own 2 lots side by side. Build your dream home or a duplex and collect some revenue. Located on the corner of Shalestone way this property will give you the most beautiful sunrise. Hop skip and a jump to Stone Creek Village where you will enjoy restaurants, groceries and loads of shopping. Close to walking trails, bus stops and Eagle Ridge shopping center where you will find a movie theatre, more restaurants as well as choose between Starbucks or Tim Hortons.

Essential Information

MLS® #	A2222336
Price	\$75,000
Bathrooms	0.00
Acres	0.09
Type	Land
Sub-Type	Residential Land
Status	Active

Community Information

Address	101 Shalestone Way
Subdivision	Timberlea
City	Fort McMurray
County	Wood Buffalo
Province	Alberta
Postal Code	T9K 0T7



Additional Information

Date Listed	May 17th, 2025
Days on Market	80
Zoning	R2

Listing Details

Listing Office	3% REALTY FORT MCMURRAY
----------------	-------------------------

Data is supplied by Pillar 9â„¸ MLSÂ® System. Pillar 9â„¸ is the owner of the copyright in its MLSÂ® System. Data is deemed reliable but is not guaranteed accurate by Pillar 9â„¸. The trademarks MLSÂ®, Multiple Listing ServiceÂ® and the associated logos are owned by The Canadian Real Estate Association (CREA) and identify the quality of services provided by real estate professionals who are members of CREA. Used under license.