

\$490,000 - 14132 East Bank Road, Rural Yellowhead County

MLS® #A2222743

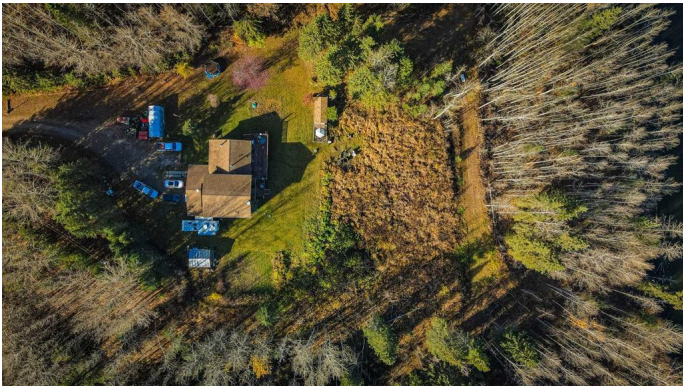
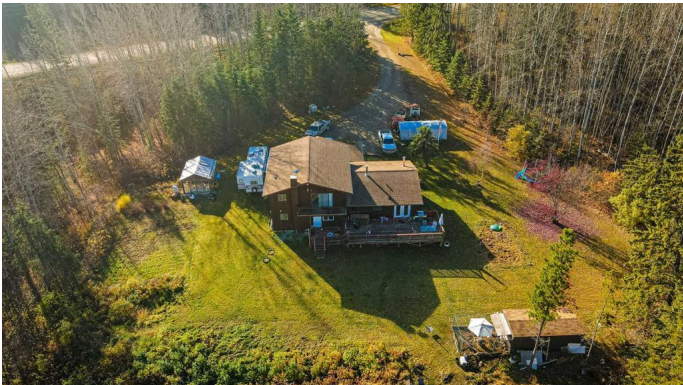
\$490,000

4 Bedroom, 3.00 Bathroom, 2,297 sqft
Residential on 12.90 Acres

NONE, Rural Yellowhead County, Alberta

Nestled on 12.9 acres along the East Bank Road, this 4-bedroom, 3-bathroom split-level home offers both space and privacy with stunning views of the McLeod River. The home features two separate living areas, making it ideal for extended family, guests or entertaining. The main living space includes 3 spacious bedrooms, 2 bathrooms, kitchen, and a bright living room perfect for entertaining or relaxing.

The second living area, with its own entrance, offers 1 bedroom, 1 bathroom, and a kitchen and living room, providing a cozy and private retreat. Outside, enjoy the peaceful setting with a private yard and the tranquil views of the river, making this property a perfect blend of rural charm and comfort. This home has also recently been repainted.



Built in 1978

Essential Information

MLS® #	A2222743
Price	\$490,000
Bedrooms	4
Bathrooms	3.00
Full Baths	3
Square Footage	2,297

Acres	12.90
Year Built	1978
Type	Residential
Sub-Type	Detached
Style	Acreage with Residence, 4 Level Split
Status	Active

Community Information

Address	14132 East Bank Road
Subdivision	NONE
City	Rural Yellowhead County
County	Yellowhead County
Province	Alberta
Postal Code	T7E 3Z4

Amenities

Parking	Double Garage Attached
# of Garages	1

Interior

Interior Features	See Remarks
Appliances	Dishwasher, Dryer, Refrigerator, Stove(s), Washer, Range Hood
Heating	Forced Air
Cooling	None
Fireplace	Yes
# of Fireplaces	1
Fireplaces	Living Room, Wood Burning
Has Basement	Yes
Basement	Crawl Space, Partial

Exterior

Exterior Features	Private Yard
Lot Description	Lawn, Many Trees
Roof	Asphalt Shingle
Construction	Wood Frame, Wood Siding
Foundation	Poured Concrete

Additional Information

Date Listed	May 20th, 2025
-------------	----------------

Days on Market 76
Zoning RD

Listing Details

Listing Office CENTURY 21 TWIN REALTY

Data is supplied by Pillar 9â„¢ MLSÂ® System. Pillar 9â„¢ is the owner of the copyright in its MLSÂ® System. Data is deemed reliable but is not guaranteed accurate by Pillar 9â„¢. The trademarks MLSÂ®, Multiple Listing ServiceÂ® and the associated logos are owned by The Canadian Real Estate Association (CREA) and identify the quality of services provided by real estate professionals who are members of CREA. Used under license.