

\$7 - 201 & 202, 1290 Trans Canada Way Se, Medicine Hat

MLS® #A2222745

\$7

0 Bedroom, 0.00 Bathroom,
Commercial on 0.00 Acres

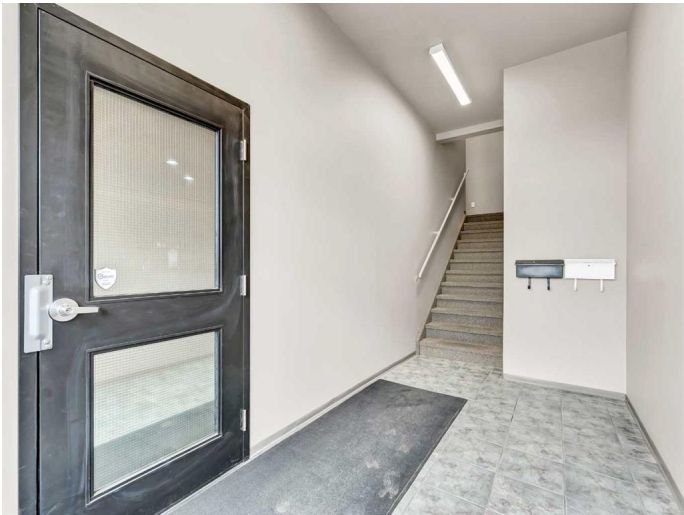
Southview-Park Meadows, Medicine Hat,
Alberta

Second floor office space totaling 1,970 SF available at Trans Canada Junction, a prominent commercial property located along one of Medicine Hat’s primary commercial corridors. This bright, well-configured space features abundant natural light, excellent exposure, and ample on-site parking. Situated at the intersection of Trans Canada Way SE and 13th Avenue SE (14,980 VPD+), the site offers outstanding accessibility and visibility. Surrounded by a strong mix of national and local tenants, this unit is ideal for office users seeking a professional setting with profile. Space can be also be demised into two units of 1,000 SF and 970 SF, accordingly. Estimated 2025 operating costs are \$9.87 PSF.

Built in 1968

Essential Information

MLS® #	A2222745
Price	\$7
Bathrooms	0.00
Acres	0.00
Year Built	1968
Type	Commercial
Sub-Type	Mixed Use
Status	Active



Community Information

Address	201 & 202, 1290 Trans Canada Way Se
Subdivision	Southview-Park Meadows
City	Medicine Hat
County	Medicine Hat
Province	Alberta
Postal Code	T1B 1J5

Additional Information

Date Listed	May 20th, 2025
Days on Market	72
Zoning	C-H

Listing Details

Listing Office	AVISON YOUNG
----------------	--------------

Data is supplied by Pillar 9â„¢ MLS® System. Pillar 9â„¢ is the owner of the copyright in its MLS® System. Data is deemed reliable but is not guaranteed accurate by Pillar 9â„¢. The trademarks MLS®, Multiple Listing Service® and the associated logos are owned by The Canadian Real Estate Association (CREA) and identify the quality of services provided by real estate professionals who are members of CREA. Used under license.