

\$219,900 - 445004 Rr #42, Rural Ponoka County

MLS® #A2222929

\$219,900

0 Bedroom, 0.00 Bathroom,
Land on 10.01 Acres

NONE, Rural Ponoka County, Alberta

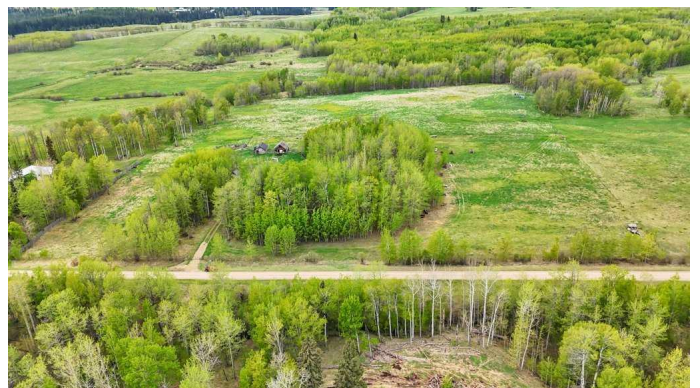
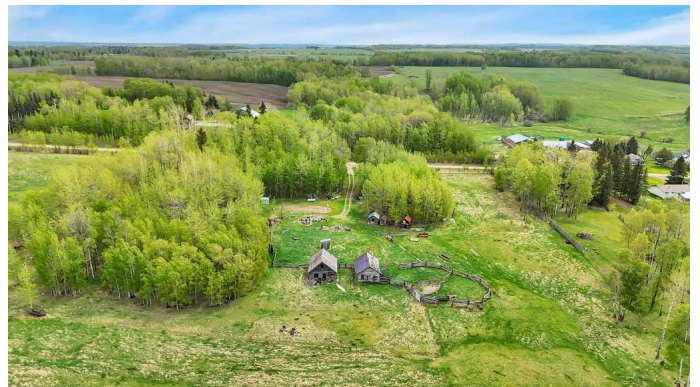
10 Acres with a Stunning View on a Quiet
Country Road

Nestled in the picturesque rolling hills northwest of Rimbey, this 10-acre parcel offers tranquility, beauty, and endless potential. Situated on a peaceful no-exit road, the property features a mature yard site with some existing services, framed by established trees and a scenic mix of open pasture.

Remnants of the original outbuildings and corral system hint at the property's rich history, providing a rustic backdrop for your future plans. Whether you're envisioning a hobby farm, a private retreat, or a place to build your dream home, this land is ready for its next chapter.

The southwest-facing view is truly something special—imagine enjoying spectacular sunsets over the hills and trees every evening from your porch.

Zoned Agricultural, this property offers flexibility for a range of uses, from keeping animals to simply enjoying the peace and privacy of country living. Parcels like this don't come on the market often—come see the potential and start making your dreams a reality.



Essential Information

MLS® #	A2222929
Price	\$219,900
Bathrooms	0.00
Acres	10.01
Type	Land
Sub-Type	Residential Land
Status	Active

Community Information

Address	445004 Rr #42
Subdivision	NONE
City	Rural Ponoka County
County	Ponoka County
Province	Alberta
Postal Code	T0C 0M0

Amenities

Utilities	Electricity Paid For
-----------	----------------------

Additional Information

Date Listed	May 20th, 2025
Days on Market	2
Zoning	AG

Listing Details

Listing Office	CIR Realty
----------------	------------

Data is supplied by Pillar 9â„¢ MLS® System. Pillar 9â„¢ is the owner of the copyright in its MLS® System. Data is deemed reliable but is not guaranteed accurate by Pillar 9â„¢. The trademarks MLS®, Multiple Listing Service® and the associated logos are owned by The Canadian Real Estate Association (CREA) and identify the quality of services provided by real estate professionals who are members of CREA. Used under license.