

\$1,270,000 - 193050 Range Road 252, Rural Vulcan County

MLS® #A2224139

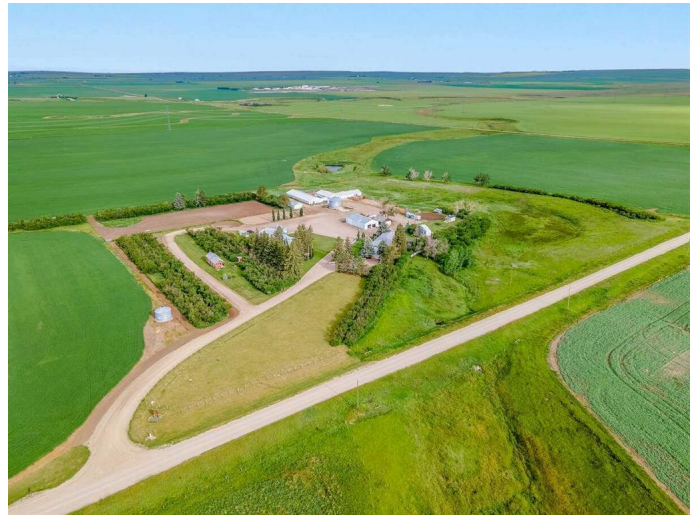
\$1,270,000

6 Bedroom, 3.00 Bathroom, 2,373 sqft
Residential on 17.57 Acres

NONE, Rural Vulcan County, Alberta

For more information, please click the "More Information" button.

Stunning 17.57-Acre Equestrian Ranch with Bungalow, Cabins & Dream Shop – Just 40 Minutes from South Calgary. Welcome to your dream property – where country charm meets incredible versatility. Nestled on 17.57 beautifully maintained acres, this remarkable ranch offers endless opportunities for horse enthusiasts, business-minded entrepreneurs, multi-generational families, or contractors in need of exceptional space and amenities. The 2,372 sq ft (above grade) bungalow exudes warmth and comfort, featuring a crackling wood-burning stove, a cozy gas fireplace, and breathtaking views of the Rocky Mountains. Stay cool in the summer with central A/C, and enjoy a chef’s kitchen designed for entertaining – complete with granite countertops, elegant cabinetry, a spacious island, and abundant storage. With 4 spacious bedrooms and 2 dedicated offices, there’s room for work, rest, and everything in between. The rustic finished separate lower living area, with private entrance offers a peaceful retreat. Step outside and explore a wide array of versatile outbuildings – ideal for storing tractors, RVs, boats, horse trailers, or hay. The main shop is a showstopper, featuring commercial-grade HOTSYS car wash system, full drainage, laundry room & lockers. Horse lovers will fall in love with the



exceptional equestrian amenities, including 350' x 150' outdoor arena, 110' x 70' sand arena, 50â€™™ round pen. Three barns with power, heat, and water, two corral systems with continuous metal panels and automatic waterers, tack room with water power and heat. Exercise track and natural spring-runoff creek for year-round enjoyment. The beautifully landscaped grounds feature apple and pear trees, vibrant flower gardens, a 60â€™™ x 60â€™™ vegetable garden, and two greenhousesâ€”perfect for the green thumb in the family. All of this located just 40 minutes from south Calgary, offering the ideal blend of rural tranquility and urban accessibility. This one-of-a-kind property is more than just a homeâ€”itâ€™™s a lifestyle.

Built in 1972

Essential Information

MLS® #	A2224139
Price	\$1,270,000
Bedrooms	6
Bathrooms	3.00
Full Baths	2
Half Baths	1
Square Footage	2,373
Acres	17.57
Year Built	1972
Type	Residential
Sub-Type	Detached
Style	Bungalow, Acreage with Residence
Status	Active

Community Information

Address	193050 Range Road 252
Subdivision	NONE
City	Rural Vulcan County
County	Vulcan County

Province	Alberta
Postal Code	T0L 0J0

Amenities

Parking Spaces	20
Parking	Double Garage Detached, Parking Pad, RV Access/Parking, Triple Garage Detached
# of Garages	10

Interior

Interior Features	Breakfast Bar, Ceiling Fan(s), Central Vacuum, Closet Organizers, Granite Counters, Kitchen Island, No Animal Home, No Smoking Home, Pantry, Separate Entrance, Soaking Tub, Storage, Walk-In Closet(s), Built-in Features, Wet Bar
Appliances	Dishwasher, Gas Water Heater, Washer/Dryer, Gas Stove
Heating	Fireplace(s), Forced Air, Natural Gas, Wood Stove, Wood
Cooling	Central Air
Fireplace	Yes
# of Fireplaces	3
Fireplaces	Gas, Wood Burning Stove
Has Basement	Yes
Basement	Finished, Full, Exterior Entry

Exterior

Exterior Features	Courtyard, Fire Pit, Garden, RV Hookup, Storage, Barbecue, Playground, Uncovered Courtyard
Lot Description	Garden, Lawn, Private, Underground Sprinklers, Yard Drainage, Creek/River/Stream/Pond, Fruit Trees/Shrub(s), Few Trees, Pasture, Views
Roof	Metal
Construction	Vinyl Siding, Wood Frame, Metal Siding
Foundation	Poured Concrete

Additional Information

Date Listed	May 23rd, 2025
Days on Market	113
Zoning	RG

Listing Details

Listing Office	Easy List Realty
----------------	------------------

Data is supplied by Pillar 9â„¢ MLS® System. Pillar 9â„¢ is the owner of the copyright in its MLS® System. Data is deemed reliable but is not guaranteed accurate by Pillar 9â„¢. The trademarks MLS®, Multiple Listing Service® and the associated logos are owned by The Canadian Real Estate Association (CREA) and identify the quality of services provided by real estate professionals who are members of CREA. Used under license.