

\$333,900 - 5 Parkland Drive, Sylvan Lake

MLS® #A2224706

\$333,900

5 Bedroom, 2.00 Bathroom, 1,017 sqft
Residential on 0.09 Acres

Lakeview Heights, Sylvan Lake, Alberta

Affordable & Upgraded Half Duplex in
Beautiful Sylvan Lake – No Condo Fees!
Awesome layout!

Discover the charm of year-round living in
Sylvan Lake – a vibrant community of
16,000 residents enjoying small-town
friendliness with big-city amenities. Just 20
minutes west from Red Deer, this lakeside
town is not only Alberta's top vacation
destination with over a million visitors annually,
but also a wonderful place to call home.

This well-maintained 1/2 duplex offers
exceptional value with no condo fees, a fully
fenced backyard, and numerous recent
upgrades, including:

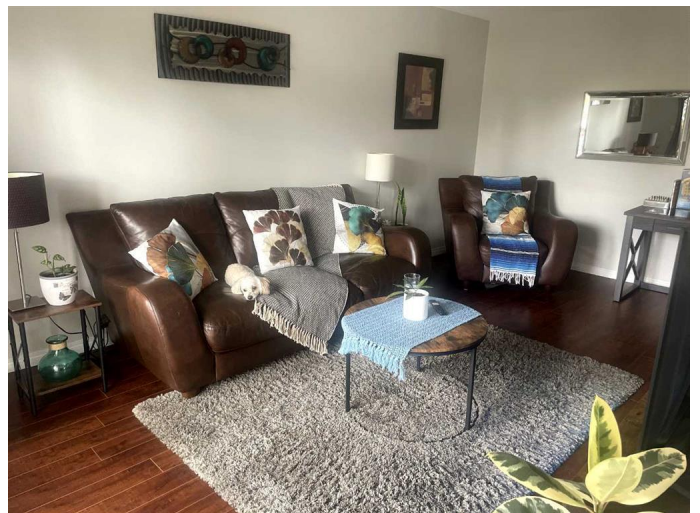
- New windows in the basement.
- New roof 2019.
- Updated plumbing and electrical.
- newer kitchen on the main floor.
- New 50-gallon natural gas hot water tank
(11-year warranty remaining).
- High-speed internet (1.5 Gbps) available.
- Enclosed yard with gate just done.

Main Floor Features:

- 3 bedrooms and 1 full bath.
- Modern tile and laminate flooring
throughout.
- Balcony off the main living space.
- Kitchen with fridge, stove, dishwasher,
washer & dryer.

Fully Finished Basement:

- Spacious oak kitchen with 5 appliances.
- Large full bathroom with elegant tiling.
- Separate laundry (washer & dryer)



included).

â€¢ Comfortable living room, perfect for guests or extended family in one house.

Located in a quiet, family-friendly neighborhood, this home is across from a park and walking distance to schools, grocery stores, coffee shops, and more. The stunning lake and sandy beaches are just 15 minutes away on foot â€” or a 2-minute drive.

Whether youâ€™re a large family, an investor, or someone seeking a relaxed lifestyle, this move-in ready home is an ideal opportunity in a growing and desirable community.

Built in 1977

Essential Information

MLS® #	A2224706
Price	\$333,900
Bedrooms	5
Bathrooms	2.00
Full Baths	2
Square Footage	1,017
Acres	0.09
Year Built	1977
Type	Residential
Sub-Type	Semi Detached
Style	Side by Side, Bi-Level
Status	Active

Community Information

Address	5 Parkland Drive
Subdivision	Lakeview Heights
City	Sylvan Lake
County	Red Deer County
Province	Alberta
Postal Code	T4S 1J5

Amenities

Parking Spaces	2
----------------	---

Parking	Off Street
---------	------------

Interior

Interior Features	Low Flow Plumbing Fixtures, Vinyl Windows
Appliances	Dishwasher, Electric Stove, Refrigerator, Washer/Dryer
Heating	Forced Air, Natural Gas
Cooling	None
Has Basement	Yes
Basement	Exterior Entry, Finished, Full

Exterior

Exterior Features	Other
Lot Description	Dog Run Fenced In, Landscaped, Level, Low Maintenance Landscape
Roof	Asphalt Shingle
Construction	Wood Frame
Foundation	Poured Concrete

Additional Information

Date Listed	June 2nd, 2025
Days on Market	16
Zoning	R2

Listing Details

Listing Office	ComFree
----------------	---------

Data is supplied by Pillar 9â„¢ MLS® System. Pillar 9â„¢ is the owner of the copyright in its MLS® System. Data is deemed reliable but is not guaranteed accurate by Pillar 9â„¢. The trademarks MLS®, Multiple Listing Service® and the associated logos are owned by The Canadian Real Estate Association (CREA) and identify the quality of services provided by real estate professionals who are members of CREA. Used under license.