

\$849,900 - 2436 Palisade Drive Sw, Calgary

MLS® #A2226906

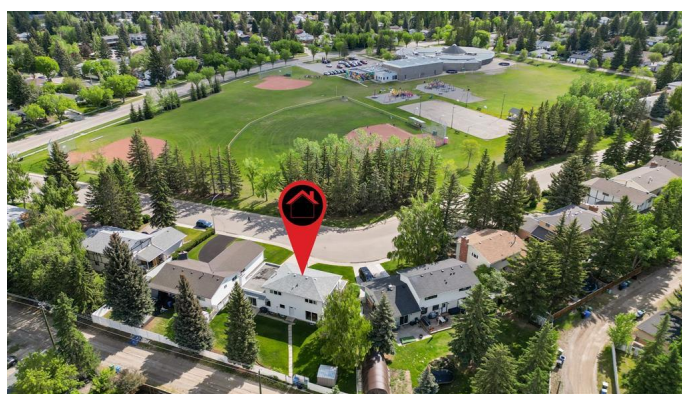
\$849,900

4 Bedroom, 4.00 Bathroom, 1,964 sqft

Residential on 0.18 Acres

Palliser, Calgary, Alberta

Beautifully maintained by the original owner, this charming two-storey home is perfectly positioned across from green space and mature trees in the desirable community of Palliser. Set on an oversized pie-shaped lot with a sunny west-facing backyard, this 4-bedroom, 3.5-bathroom home offers an ideal blend of space, comfort, and timeless appeal for growing families. The bright and welcoming front entry opens to a well-designed layout anchored by a central staircase. The front living room is bathed in natural light and offers a versatile space for relaxing or entertaining, while the formal dining room sets the stage for dinners at home. At the rear of the home, the kitchen boasts oak cabinetry, a full appliance package, and ample prep space. A sunny breakfast nook is perfect for casual meals and the adjacent cozy family room with a mid-century stone-faced gas fireplace is the spot where the family will gather for movie or games nights. Sliding patio doors lead out to a large, landscaped yard, ideal for kids, pets, and peaceful evenings outdoors. Upstairs you'll find four bedrooms including a spacious primary suite with a 3-piece ensuite. An oversized family bath serves the other three bedrooms. Move into the lower level and discover a spacious rec room with a separate den - ideal for a home office, gym, or flexible living space. A 3-piece bathroom adds convenience, while additional unfinished space offers excellent storage or future development potential. Pride of ownership is



evident throughout, and with its unbeatable location and classic layout, this home is move-in ready with room to make it your own. Live the Palliser lifestyle, where tree-lined streets, top schools, and community charm come together.

Built in 1968

Essential Information

MLS® #	A2226906
Price	\$849,900
Bedrooms	4
Bathrooms	4.00
Full Baths	3
Half Baths	1
Square Footage	1,964
Acres	0.18
Year Built	1968
Type	Residential
Sub-Type	Detached
Style	2 Storey
Status	Active

Community Information

Address	2436 Palisade Drive Sw
Subdivision	Palliser
City	Calgary
County	Calgary
Province	Alberta
Postal Code	T2V 3V3

Amenities

Parking Spaces	4
Parking	Double Garage Attached, Driveway
# of Garages	2

Interior

Interior Features	Laminate Counters
-------------------	-------------------

Appliances	Dishwasher, Dryer, Electric Range, Microwave Hood Fan, Refrigerator, Washer, Water Softener, Window Coverings
Heating	Forced Air, Natural Gas
Cooling	None
Fireplace	Yes
# of Fireplaces	1
Fireplaces	Gas, Living Room, Stone
Has Basement	Yes
Basement	Finished, Full

Exterior

Exterior Features	Private Yard
Lot Description	Back Lane, Back Yard, Corner Lot, Front Yard
Roof	Asphalt Shingle
Construction	Stucco, Wood Frame
Foundation	Poured Concrete

Additional Information

Date Listed	June 5th, 2025
Days on Market	3
Zoning	R-CG

Listing Details

Listing Office	RE/MAX House of Real Estate
----------------	-----------------------------

Data is supplied by Pillar 9â„¢ MLS® System. Pillar 9â„¢ is the owner of the copyright in its MLS® System. Data is deemed reliable but is not guaranteed accurate by Pillar 9â„¢. The trademarks MLS®, Multiple Listing Service® and the associated logos are owned by The Canadian Real Estate Association (CREA) and identify the quality of services provided by real estate professionals who are members of CREA. Used under license.