

# \$355,000 - 103 Ranch Ridge Meadow, Strathmore

MLS® #A2227055

**\$355,000**

3 Bedroom, 3.00 Bathroom, 1,149 sqft  
Residential on 0.03 Acres

Ranch Estates, Strathmore, Alberta

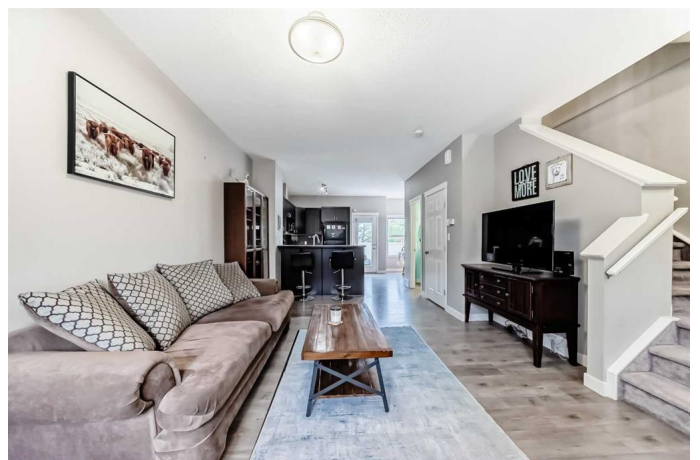
OPEN HOUSE SAT JUNE 21, 2-4PM.

Welcome to one of the MOST DESIRABLE LAYOUTS in this well-maintained and well managed townhouse complexâ€”perfectly located just steps from parks, shopping, dining, and all the amenities of downtown!

This 2-storey home offers LARGE DUAL MASTER SUITES, each with spacious layouts, walk-in closets, and their OWN PRIVATE ENSUITES (one 3-piece and one 4-piece with dual shower heads!). The open-concept main floor is designed for modern living featuring high end laminate flooring throughout, 9â€™™ ceilings, large windows that flood the space with natural light, a cozy living room, an eat-up kitchen with plenty of counter space, a fridge with ice maker, a convenient half-bath, and a separate dining area that opens onto your own SOUTHWEST FACING PRIVATE PATIOâ€”complete with gas BBQ hookup, trees, and green space. No direct neighbours behind means extra peace and privacy.

The FULLY DEVELOPED BASEMENT extends your living space with a den/sitting areaâ€”perfect for a gym, home office, or TV nookâ€”a THIRD LARGE BEDROOM, another FULL 4 PIECE BATHROOM, and a dedicated laundry room.

Additional highlights include: \*Assigned parking right at your front door. \*LOW CONDO



FEES that cover lawn care and snow removal.  
\*PET-FRIENDLY complex (2 cats or dogs with board approval). \*Private resident playground plus a nearby community park. \*Well-managed and maintained development. \*Hot water tank can be scheduled for recirculation to provide hot water faster.

This rare layout with 3 large bedrooms and 3.5 bathrooms offers flexibility for families, guests, or roommates. Whether you're upsizing, downsizing, or investing, this is a fantastic opportunity in a sought-after location.

Don't miss your chance to own this exceptional unit—book your showing today!

Built in 2007

### Essential Information

MLS® #	A2227055
Price	\$355,000
Bedrooms	3
Bathrooms	3.00
Full Baths	3
Square Footage	1,149
Acres	0.03
Year Built	2007
Type	Residential
Sub-Type	Row/Townhouse
Style	2 Storey
Status	Active

### Community Information

Address	103 Ranch Ridge Meadow
Subdivision	Ranch Estates
City	Strathmore
County	Wheatland County
Province	Alberta
Postal Code	T1P 0A9

## Amenities

Amenities	Park
Parking Spaces	1
Parking	Parking Pad

## Interior

Interior Features	Vinyl Windows, Walk-In Closet(s)
Appliances	Dishwasher, Dryer, Electric Stove, Microwave Hood Fan, Refrigerator, Washer, Window Coverings
Heating	Forced Air
Cooling	None
Has Basement	Yes
Basement	Finished, Full

## Exterior

Exterior Features	BBQ gas line
Lot Description	Back Yard, Few Trees, Landscaped, Lawn, No Neighbours Behind
Roof	Asphalt Shingle
Construction	Vinyl Siding, Wood Frame
Foundation	Poured Concrete

## Additional Information

Date Listed	June 20th, 2025
Days on Market	1
Zoning	R2X

## Listing Details

Listing Office	Real Estate Professionals Inc.
----------------	--------------------------------

Data is supplied by Pillar 9â„¢ MLS® System. Pillar 9â„¢ is the owner of the copyright in its MLS® System. Data is deemed reliable but is not guaranteed accurate by Pillar 9â„¢. The trademarks MLS®, Multiple Listing Service® and the associated logos are owned by The Canadian Real Estate Association (CREA) and identify the quality of services provided by real estate professionals who are members of CREA. Used under license.