

\$399,900 - 4525 Moore Crescent, Red Deer

MLS® #A2231810

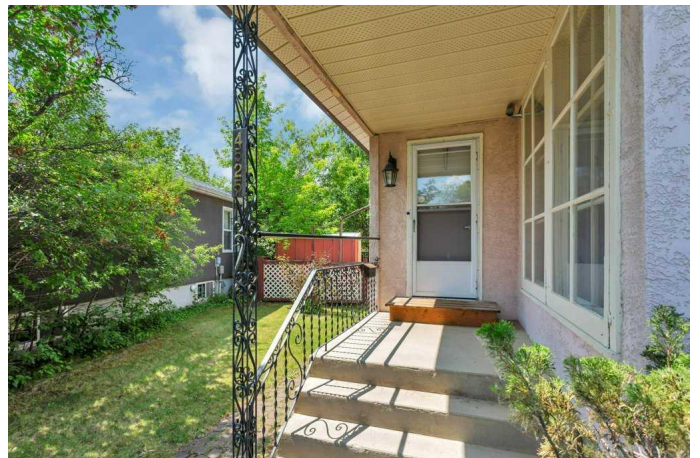
\$399,900

4 Bedroom, 2.00 Bathroom, 1,800 sqft

Residential on 0.12 Acres

Waskasoo, Red Deer, Alberta

CHARMING SPLIT LEVEL HOME NESTLED ON A CORNER LOT IN THE HEART OF WASKASOO! This home is an ideal choice for families, professionals, or anyone looking for a character home with style. The main level is bright and welcoming with an open-concept living area and large windows for lots of natural light. The U-shaped kitchen features stainless appliances, tile backsplash, partial butcher block counter and a double sink with large window looking to the side yard. The dining area seamlessly connects off the kitchen with a bay window for more natural light. Head to the upper level where you will find three bedrooms and a four piece bathroom. The third level offers a second entrance, bedroom with three piece ensuite and a large family room with garden doors out to the rear yard. The fourth level has the laundry area with a sink, utility room and space for additional storage needs. This home has been updated with quality materials built to last. A few vinyl windows, 200 amp electrical main service (ample power for any sized hot tub and electric car charger), shingles with rhino membrane and new plumbing. The exterior features a single detached garage to provide plenty of parking and storage, while the ample street parking ensure convenience for guests. The fenced in yard is surrounded by gorgeous mature trees and is an incredible space to kick back and relax in. Living in Waskasoo means enjoying a well-established neighborhood with incredible amenities. Just



blocks from the high school and outdoor recreation is right at your doorstep. This home blends thoughtful design and a fantastic location!

Built in 1950

Essential Information

| | |
|----------------|---------------|
| MLS® # | A2231810 |
| Price | \$399,900 |
| Bedrooms | 4 |
| Bathrooms | 2.00 |
| Full Baths | 2 |
| Square Footage | 1,800 |
| Acres | 0.12 |
| Year Built | 1950 |
| Type | Residential |
| Sub-Type | Detached |
| Style | 4 Level Split |
| Status | Active |

Community Information

| | |
|-------------|---------------------|
| Address | 4525 Moore Crescent |
| Subdivision | Waskasoo |
| City | Red Deer |
| County | Red Deer |
| Province | Alberta |
| Postal Code | T4N 2M1 |

Amenities

| | |
|----------------|--------------------------------------|
| Parking Spaces | 1 |
| Parking | Alley Access, Single Garage Attached |
| # of Garages | 1 |

Interior

| | |
|-------------------|--|
| Interior Features | Laminate Counters, Pantry, Vinyl Windows |
| Appliances | Dishwasher, Electric Stove, Range Hood, Refrigerator, Washer/Dryer |
| Heating | Forced Air, Natural Gas |
| Cooling | None |

| | |
|-----------------|---|
| Fireplace | Yes |
| # of Fireplaces | 1 |
| Fireplaces | Brick Facing, Family Room, Wood Burning |
| Has Basement | Yes |
| Basement | Full, Partially Finished |

Exterior

| | |
|-------------------|--|
| Exterior Features | None |
| Lot Description | Back Lane, Back Yard, Corner Lot, Landscaped, Pie Shaped Lot |
| Roof | Asphalt Shingle |
| Construction | Stucco, Wood Frame |
| Foundation | Poured Concrete |

Additional Information

| | |
|----------------|-----------------|
| Date Listed | June 18th, 2025 |
| Days on Market | 9 |
| Zoning | R1 |

Listing Details

| | |
|----------------|-----------------------------------|
| Listing Office | Royal LePage Network Realty Corp. |
|----------------|-----------------------------------|

Data is supplied by Pillar 9â„¢ MLS® System. Pillar 9â„¢ is the owner of the copyright in its MLS® System. Data is deemed reliable but is not guaranteed accurate by Pillar 9â„¢. The trademarks MLS®, Multiple Listing Service® and the associated logos are owned by The Canadian Real Estate Association (CREA) and identify the quality of services provided by real estate professionals who are members of CREA. Used under license.