

# \$599,900 - 14006 Highway 36/55 Bypass, Lac La Biche

MLS® #A2231890

**\$599,900**

0 Bedroom, 0.00 Bathroom,  
Land on 4.74 Acres

Lac La Biche, Lac La Biche, Alberta

4.74 ACRE CORNER SITE in Lac La Biche, Alberta - HIGH traffic location on Highway 36 & 55/881 Highway BYPASS Next to this site is Independent Foods grocery Store & going up is the New MacDonald's as well is GROWTH is happening and be the owner of this great site! Perfect fit for a hotel site; commercial Strip mall site and many other possibilities! The site will require fill and other work to bring to building spec but at this price you cant beat it! Being "sold as is where is" but priced to move! Call Today!

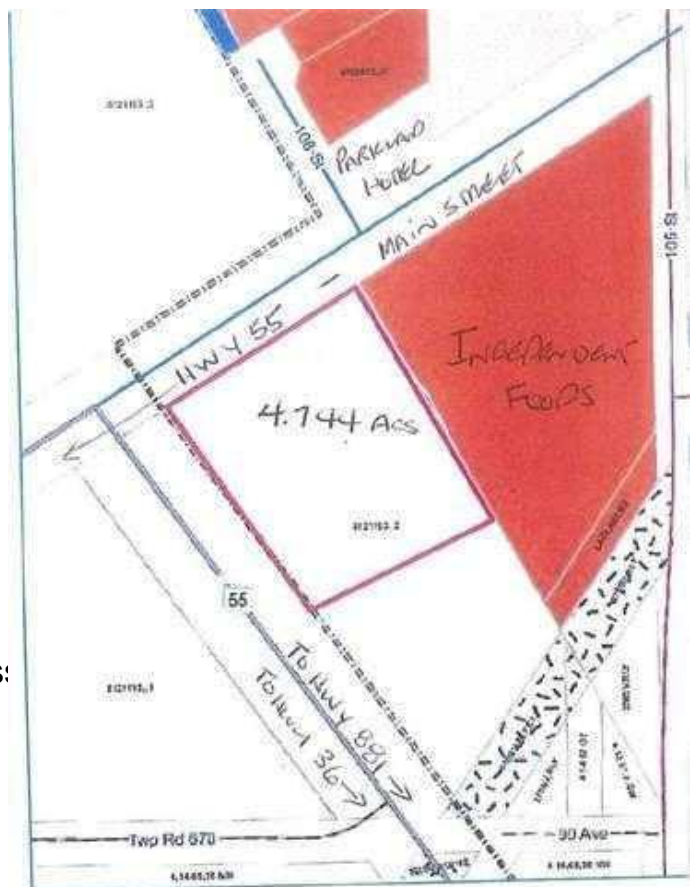


## Essential Information

MLS® #	A2231890
Price	\$599,900
Bathrooms	0.00
Acres	4.74
Type	Land
Sub-Type	Commercial Land
Status	Active

## Community Information

Address	14006 Highway 36/55 Bypass
Subdivision	Lac La Biche
City	Lac La Biche
County	Lac La Biche County
Province	Alberta
Postal Code	T0A2C0



## Additional Information

Date Listed	June 17th, 2025
Days on Market	70
Zoning	HIGHWAY COMMERCIAL

## Listing Details

Listing Office	COLDWELL BANKER UNITED
----------------	------------------------

Data is supplied by Pillar 9â„¢ MLS® System. Pillar 9â„¢ is the owner of the copyright in its MLS® System. Data is deemed reliable but is not guaranteed accurate by Pillar 9â„¢. The trademarks MLS®, Multiple Listing Service® and the associated logos are owned by The Canadian Real Estate Association (CREA) and identify the quality of services provided by real estate professionals who are members of CREA. Used under license.