

\$1,876,000 - 38 Lissington Drive Sw, Calgary

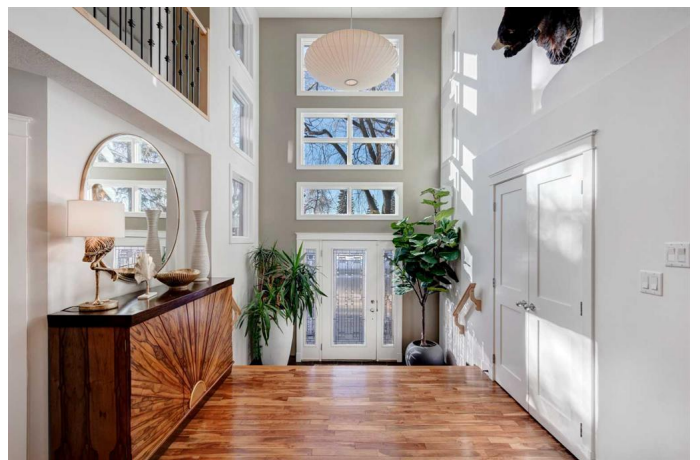
MLS® #A2233170

\$1,876,000

3 Bedroom, 4.00 Bathroom, 2,639 sqft
Residential on 0.14 Acres

North Glenmore Park, Calgary, Alberta

Lissington Drive is the most prestigious street in North Glenmore Park. Front yard greets you with mature trees and maintenance free landscaping. Through the impressive two storey foyer you will be welcomed to a spacious and bright open floor plan. Tropical Acacia hardwood floors throughout the main floor, expanding up the stairs, den and hallway. Beautiful kitchen showcases Bird's-eye maple cabinetry complete with quartz countertops and backsplash, large kitchen island with breakfast bar and a walk in pantry. There are 3 nice size bedrooms on second floor with open sitting area overlooking bellow. Primary bedroom features lovely 5 pc bathroom which includes large tub, steam shower, heated floor and double sink vanity. lower level is fully developed with large theatre room including system, 3 pc bathroom with heated floor, large storage room/utility room with 2 high efficiency furnaces, AC for upper level, solid core interior doors. Other upgrades include new shingles on the house and garage in 2022, repressure treated wood fence and gates in 2024 as well as 50k of poured concrete including patio, Hot Tub and RV parking large enough to accomodate 42 ft RV, oversized heated double garage and 50 amp electrical hookup which is currently used for EV charging. Super location, close to all amenities, including best schools, walking distance to Lakeview Golf Course, Glenmore Aquatic Centre, Glenmore Athletic Park, Glenmore Athletic Park Baseball Diamond, 7



Tennis courts, Stu Peppard Arena, parks and transit. You will love this ready to move in home situated on a large lot.

Built in 2008

Essential Information

| | |
|----------------|-------------|
| MLS® # | A2233170 |
| Price | \$1,876,000 |
| Bedrooms | 3 |
| Bathrooms | 4.00 |
| Full Baths | 3 |
| Half Baths | 1 |
| Square Footage | 2,639 |
| Acres | 0.14 |
| Year Built | 2008 |
| Type | Residential |
| Sub-Type | Detached |
| Style | 2 Storey |
| Status | Active |

Community Information

| | |
|-------------|------------------------|
| Address | 38 Lissington Drive Sw |
| Subdivision | North Glenmore Park |
| City | Calgary |
| County | Calgary |
| Province | Alberta |
| Postal Code | T3E 5E1 |

Amenities

| | |
|----------------|---|
| Parking Spaces | 4 |
| Parking | Double Garage Detached, Enclosed, Garage Door Opener, Heated Garage, In Garage Electric Vehicle Charging Station(s), Oversized, Parking Pad, RV Access/Parking, Paved, Private Electric Vehicle Charging Station(s) |
| # of Garages | 2 |

Interior

| | |
|-------------------|--|
| Interior Features | Central Vacuum, Kitchen Island, No Smoking Home, Open Floorplan, |
|-------------------|--|

| | |
|-----------------|--|
| | Pantry, Storage |
| Appliances | Central Air Conditioner, Dishwasher, Microwave, Range Hood, Refrigerator |
| Heating | Forced Air |
| Cooling | Central Air |
| Fireplace | Yes |
| # of Fireplaces | 1 |
| Fireplaces | Gas, Mantle, Stone, Three-Sided |
| Has Basement | Yes |
| Basement | Finished, Full |

Exterior

| | |
|-------------------|--|
| Exterior Features | BBQ gas line, Private Yard |
| Lot Description | Back Lane, Back Yard, Maintenance Landscape, Private |
| Roof | Asphalt Shingle |
| Construction | Stone, Stucco |
| Foundation | Poured Concrete |

Additional Information

| | |
|----------------|-----------------|
| Date Listed | June 19th, 2025 |
| Days on Market | 51 |
| Zoning | R-CG |

Listing Details

| | |
|----------------|-----------------------------|
| Listing Office | RE/MAX House of Real Estate |
|----------------|-----------------------------|

Data is supplied by Pillar 9â„¢ MLSÂ® System. Pillar 9â„¢ is the owner of the copyright in its MLSÂ® System. Data is deemed reliable but is not guaranteed accurate by Pillar 9â„¢. The trademarks MLSÂ®, Multiple Listing ServiceÂ® and the associated logos are owned by The Canadian Real Estate Association (CREA) and identify the quality of services provided by real estate professionals who are members of CREA. Used under license.

