

# \$339,000 - 293 Grenfell Crescent, Fort McMurray

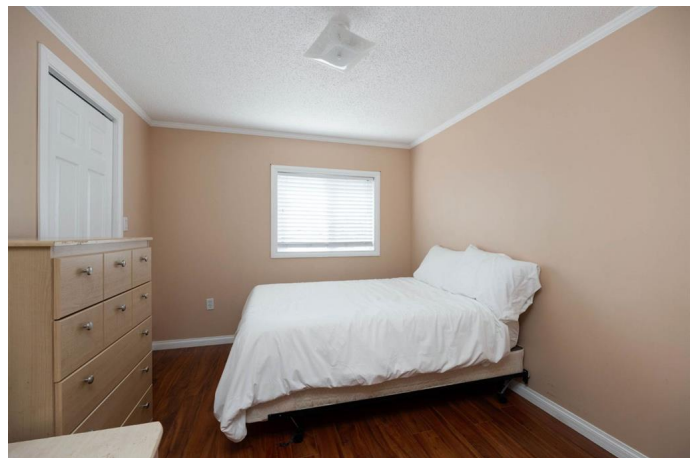
MLS® #A2234627

**\$339,000**

6 Bedroom, 3.00 Bathroom, 1,208 sqft  
Residential on 0.11 Acres

Gregoire Park, Fort McMurray, Alberta

Welcome to 293 Grenfell Crescent, a custom and truly unique home offering nearly 2,300SF of total living space. Built on a solid CONCRETE FOUNDATION with a rare full, finished basement, this property provides the flexibility and room needed for large families or multi generational living. From the moment you arrive, youâ€™ll love the charming appeal and comfort. Inside, a front entryway welcomes you into the bright, airy living room, open concept kitchen, and eat in dining area. Vaulted ceilings enhance the sense of space, while upgrades like newer flooring and fresh paint in 2025, make the heart of this home shine. A built in desk/hutch and generous counter space create a true chefâ€™s kitchen. The main floor features three well appointed bedrooms, including a spacious primary suite with a large double closet, full ensuite with soaker tub, and private deck access, your own serene retreat to savour the beauty of early mornings. Main floor laundry and another full bathroom complete this level. Head downstairs to find even more room to grow. The thoughtfully designed lower level offers three additional bedrooms with good sized closets, a full bathroom, and a cozy corner fireplace completing the expansive rec room. This generous space provides endless possibilities, from family movie nights and game days to a hobby area, home gym, or playroom, whatever suits your lifestyle! This fully fenced yard features double gate access from the front, LARGE STORAGE SHED WITH LOFT, space



for all your toys and storage needs. Thereâ€™s plenty of room for multiple vehicles, making this property as practical as it is spacious. ENJOY PEACE OF MIND WITH NEW SHINGLES INSTALLED IN 2023, and unlike many manufactured homes, this one is fully drywalled throughout no board walls here, just the solid, comfortable feel of a traditional home. Gregoire Park is all about convenience and connection. Offering plenty of restaurants, pubs, and everyday essentials like gas stations, grocery stores, hotels, and shops all within easy reach. Parks, green spaces, and walking trails make this neighbourhood perfect for active families and outdoor lovers. Donâ€™t miss out, book your private tour today!

Built in 1999

**Essential Information**

MLS® #	A2234627
Price	\$339,000
Bedrooms	6
Bathrooms	3.00
Full Baths	3
Square Footage	1,208
Acres	0.11
Year Built	1999
Type	Residential
Sub-Type	Detached
Style	Bungalow
Status	Active

**Community Information**

Address	293 Grenfell Crescent
Subdivision	Gregoire Park
City	Fort McMurray
County	Wood Buffalo
Province	Alberta

Postal Code T9H 2M8

### Amenities

Amenities Parking, Playground, Park  
Parking Spaces 4  
Parking RV Access/Parking, Stall, Driveway

### Interior

Interior Features Kitchen Island, Laminate Counters, No Animal Home, No Smoking Home, Open Floorplan, See Remarks, Soaking Tub, Vinyl Windows  
Appliances Dishwasher, Dryer, Electric Stove, Microwave, Refrigerator, Washer, Window Coverings  
Heating Central, Natural Gas  
Cooling None  
Fireplace Yes  
# of Fireplaces 1  
Fireplaces Gas, Basement  
Has Basement Yes  
Basement Finished, Full

### Exterior

Exterior Features Private Entrance, Private Yard  
Lot Description Back Yard, Front Yard, Landscaped, Street Lighting, Standard Shaped Lot  
Roof Asphalt Shingle  
Construction Vinyl Siding, Wood Frame  
Foundation Poured Concrete

### Additional Information

Date Listed July 1st, 2025  
Days on Market 89  
Zoning RMH-2

### Listing Details

Listing Office COLDWELL BANKER UNITED

Data is supplied by Pillar 9â„¢ MLSÂ® System. Pillar 9â„¢ is the owner of the copyright in its MLSÂ® System. Data is deemed reliable but is not guaranteed accurate by Pillar 9â„¢. The trademarks MLSÂ®, Multiple Listing ServiceÂ® and the associated logos are owned by The Canadian Real Estate Association (CREA) and identify the quality of services provided by real estate professionals who are members of CREA. Used under license.