

# \$225,000 - 5205 32 Street, Lloydminster

MLS® #A2234852

**\$225,000**

4 Bedroom, 2.00 Bathroom, 1,043 sqft

Residential on 0.15 Acres

Steele Heights, Lloydminster, Alberta

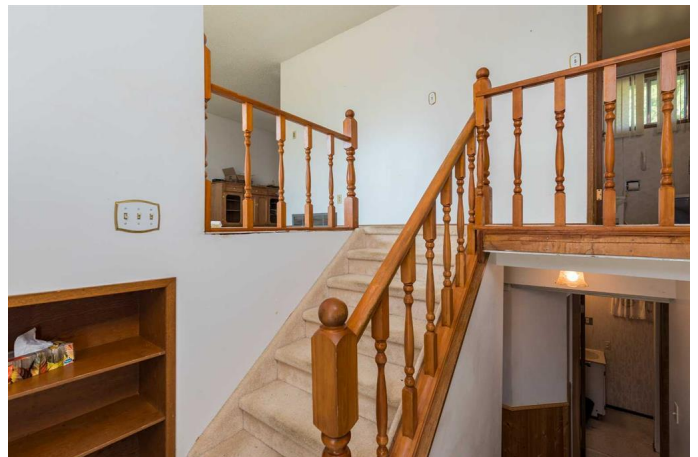
Looking for a project with potential? This 4-bedroom, 2-bathroom home is located in a peaceful area of Lloydminster, close to schools, parks, and all the essentials for family living. While the home needs some updates and TLC, it offers a solid layout and great bones for the right buyer to add their personal touch. Enjoy the convenience of a double detached garage, ample yard space, and a quiet street perfect for kids or relaxing evenings. Whether you're an investor, renovator, or a first-time buyer ready to roll up your sleeves, this property offers great value in a desirable location. Check out the 3D virtual tour!

Don't miss this opportunity to build equity in a well-located home—book your showing today!

Built in 1974

## Essential Information

MLS® #	A2234852
Price	\$225,000
Bedrooms	4
Bathrooms	2.00
Full Baths	1
Half Baths	1
Square Footage	1,043
Acres	0.15



Year Built	1974
Type	Residential
Sub-Type	Detached
Style	Bungalow
Status	Active

### Community Information

Address	5205 32 Street
Subdivision	Steele Heights
City	Lloydminster
County	Lloydminster
Province	Alberta
Postal Code	T9V 1G1

### Amenities

Parking Spaces	2
Parking	Concrete Driveway, Double Garage Detached
# of Garages	2

### Interior

Interior Features	Ceiling Fan(s), Laminate Counters, Storage
Appliances	Dishwasher, Refrigerator, Stove(s)
Heating	Forced Air, Natural Gas
Cooling	None
Has Basement	Yes
Basement	Full, Unfinished

### Exterior

Exterior Features	Private Yard
Lot Description	Back Yard, City Lot, Few Trees, Front Yard, Lawn, Rectangular Lot
Roof	Asphalt Shingle
Construction	Composite Siding, Stucco, Vinyl Siding
Foundation	Poured Concrete

### Additional Information

Date Listed	June 30th, 2025
Days on Market	28
Zoning	R1

### Listing Details

Listing Office

CENTURY 21 DRIVE

Data is supplied by Pillar 9â„¢ MLSÂ® System. Pillar 9â„¢ is the owner of the copyright in its MLSÂ® System. Data is deemed reliable but is not guaranteed accurate by Pillar 9â„¢. The trademarks MLSÂ®, Multiple Listing ServiceÂ® and the associated logos are owned by The Canadian Real Estate Association (CREA) and identify the quality of services provided by real estate professionals who are members of CREA. Used under license.