

\$533,000 - 167 Mt Rundle Road W, Lethbridge

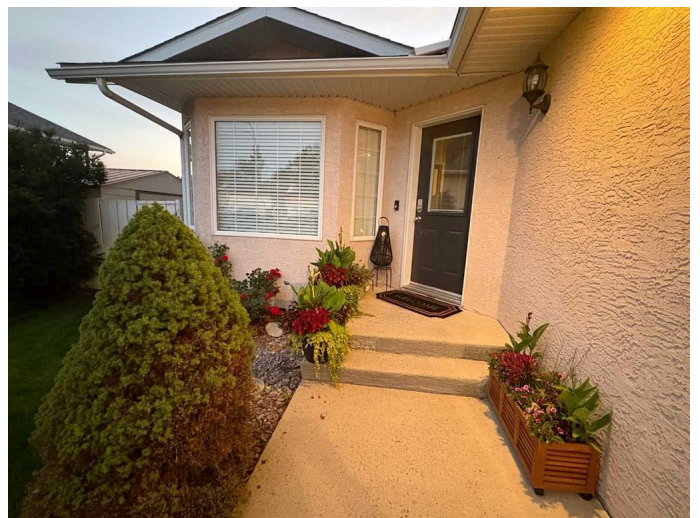
MLS® #A2237914

\$533,000

5 Bedroom, 4.00 Bathroom, 1,611 sqft
Residential on 0.15 Acres

Mountain Heights, Lethbridge, Alberta

Looking for more room for all of your peeps? Spacious 5 Bedroom Home with Beautiful Backyard in a Prime Location! This well-maintained and hard to find 5-level split offers a total living space of over 2661 sq ft! There are numerous updates, and a fantastic yard—all in a convenient Lethbridge location, and super close to elementary and middle schools and a great dog park for your fur babies. Inside, you'll find 5 spacious bedrooms, 4 full bathrooms, an office, and separate living and family room to fit your family's needs. The kitchen was renovated in 2021 with updated quartz countertops, backsplash, and stainless steel appliances, making it move-in ready for home cooks and entertainers alike. Step outside to a large, treed, and well-kept private backyard perfect for relaxing or hosting. Enjoy the pergola-covered upper deck for summer dining and a lower brick fire pit area for cozy evening gatherings. RV parking accessible from a paved back alley, off-street parking for 4 vehicles, a double attached garage, and 2 sheds add exceptional utility and storage. If you're looking for a spacious, updated home with a great yard in a family-friendly location, this property is a must-see.



Built in 1997

Essential Information

MLS® # A2237914

Price	\$533,000
Bedrooms	5
Bathrooms	4.00
Full Baths	4
Square Footage	1,611
Acres	0.15
Year Built	1997
Type	Residential
Sub-Type	Detached
Style	5 Level Split
Status	Active

Community Information

Address	167 Mt Rundle Road W
Subdivision	Mountain Heights
City	Lethbridge
County	Lethbridge
Province	Alberta
Postal Code	T1K 7G1

Amenities

Parking Spaces	4
Parking	Double Garage Attached
# of Garages	2

Interior

Interior Features	Pantry, See Remarks, Storage
Appliances	Dishwasher, Refrigerator, Stove(s), Window Coverings
Heating	Forced Air
Cooling	None
Has Basement	Yes
Basement	Full, Partially Finished

Exterior

Exterior Features	Other
Lot Description	Back Lane, Back Yard, Landscaped, Private
Roof	Asphalt Shingle
Construction	Stucco
Foundation	Poured Concrete

Additional Information

Date Listed	July 10th, 2025
Days on Market	64
Zoning	R-L

Listing Details

Listing Office	RE/MAX REAL ESTATE - LETHBRIDGE (PICTURE BUTTE)
----------------	---

Data is supplied by Pillar 9â„¢ MLS® System. Pillar 9â„¢ is the owner of the copyright in its MLS® System. Data is deemed reliable but is not guaranteed accurate by Pillar 9â„¢. The trademarks MLS®, Multiple Listing Service® and the associated logos are owned by The Canadian Real Estate Association (CREA) and identify the quality of services provided by real estate professionals who are members of CREA. Used under license.