

\$340,000 - 1802 11 Avenue N, Lethbridge

MLS® #A2238150

\$340,000

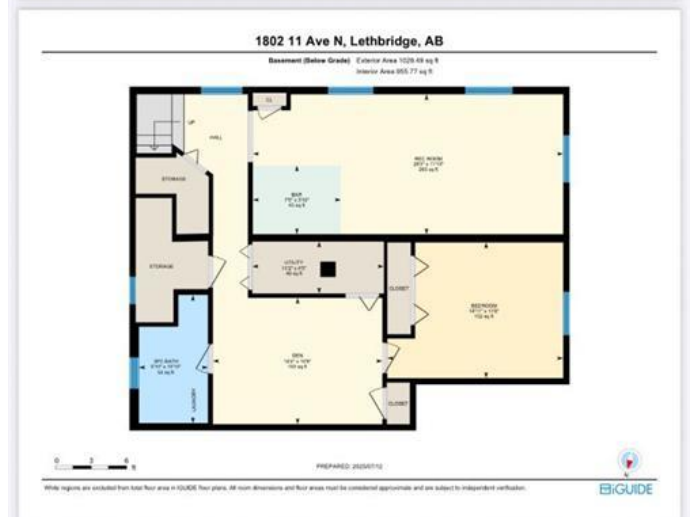
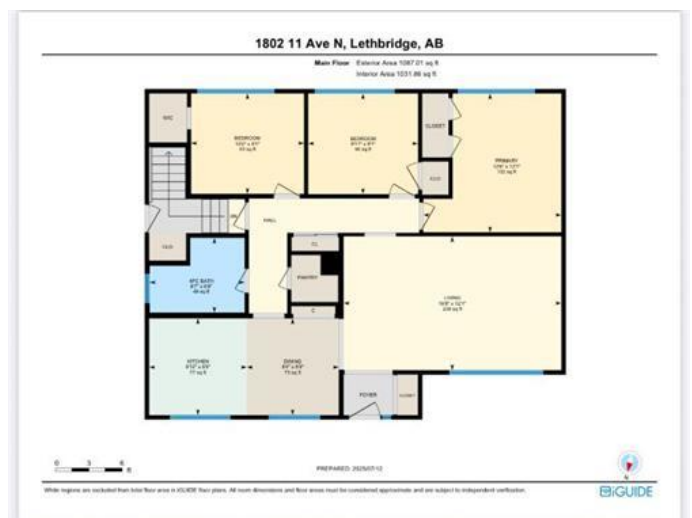
4 Bedroom, 2.00 Bathroom, 1,087 sqft
Residential on 0.16 Acres

Winston Churchill, Lethbridge, Alberta

Great house to make an offer on to flip or build equity in the potential value. In the WINSTON CHURCHILL NEIGHBOURHOOD. Original character and timeless charm, with hardwood floors, 3 bedrooms on main floor, fully developed basement with great possibilities, this bungalow offers the perfect space for a family or the opportunity to develop into separate suite with it's own entrance. Offering 2 full bathrooms, wet bar in basement family room, the living room and family room of this home has the perfect layout. Exterior has a CAR PORT, ATTACHED GARAGE, LARGE YARD FOR GARDEN with mature raspberry bushes, OR EXTRA PARKING. This home has great bones for someone looking to add their personal touch or redevelopment. Situated in a quiet, well established neighbourhood WALKING DISTANCE to NORD-BRIDGE SENIORS CENTER, 3 LEVELS OF SCHOOLS, GALBRAITH ELEMENTARY, WILSON MIDDLE SCHOOL, WINSTON CHURCHILL HIGH. On a 6817 sq. ft. corner lot close to other amenities like PARKS, WALKING TRAILS & PUBLIC TRANSIT. Don't wait on this potential family home or INVESTMENT PROPERTY corner lot for development and hot water boiler, for ZONE HEATING.

Built in 1959

Essential Information



MLS® #	A2238150
Price	\$340,000
Bedrooms	4
Bathrooms	2.00
Full Baths	2
Square Footage	1,087
Acres	0.16
Year Built	1959
Type	Residential
Sub-Type	Detached
Style	Bungalow
Status	Active

Community Information

Address	1802 11 Avenue N
Subdivision	Winston Churchill
City	Lethbridge
County	Lethbridge
Province	Alberta
Postal Code	T1H 1N2

Amenities

Parking Spaces	4
Parking	Single Garage Attached, Attached Carport
# of Garages	1

Interior

Interior Features	Built-in Features
Appliances	Electric Stove, Range Hood, Refrigerator, Washer/Dryer
Heating	Boiler, Hot Water
Cooling	None
Has Basement	Yes
Basement	Finished, Full

Exterior

Exterior Features	Garden
Lot Description	Back Yard, Corner Lot
Roof	Asphalt Shingle
Construction	Wood Siding

Foundation Poured Concrete

Additional Information

Date Listed July 12th, 2025

Days on Market 78

Zoning R-L

Listing Details

Listing Office SUTTON GROUP - LETHBRID



Data is supplied by Pillar 9â„¢ MLSÂ® System. Pillar 9â„¢ is the owner of the copyright in its MLSÂ® System. Data is deemed reliable but is not guaranteed accurate by Pillar 9â„¢. The trademarks MLSÂ®, Multiple Listing ServiceÂ® and the associated logos are owned by The Canadian Real Estate Association (CREA) and identify the quality of services provided by real estate professionals who are members of CREA. Used under license.