

\$1,739,900 - 133 Glyde Park, Rural Rocky View County

MLS® #A2239536

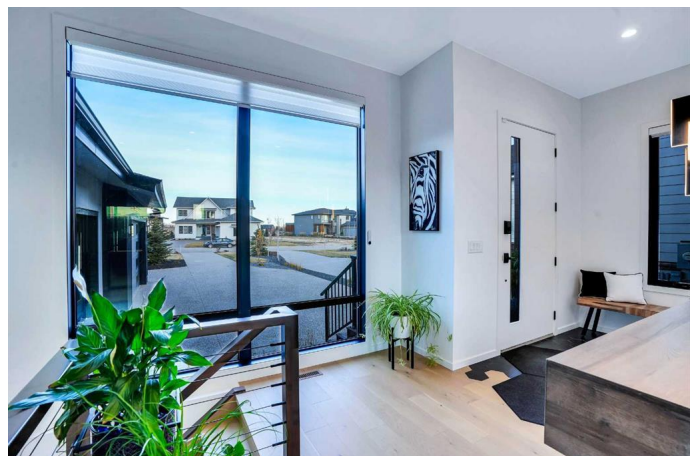
\$1,739,900

4 Bedroom, 4.00 Bathroom, 1,752 sqft

Residential on 0.26 Acres

Elbow Valley West, Rural Rocky View County,
Alberta

Welcome to this exceptional, modern, exquisite bungalow with over 3,400 of living space, where luxury meets lifestyle in one of the most desirable neighbourhoods of Elbow Valley West. This minimalistic designed home showcases high-end finishes, sleek lines, and a thoughtfully planned open-concept layout. Backing onto a tranquil pond and well-maintained tennis courts, the property offers stunning views and unmatched privacy. Enjoy morning coffee or evening gatherings on your expansive dream deck, crafted for both relaxation and entertaining, enjoy tranquility in your private Hot tub. The professionally landscaped backyard is a true sanctuary, with space for outdoor living and unobstructed nature views. Inside, the gourmet kitchen features premium cabinetry, quartz countertops, and top-of-the-line built-in appliances. High ceilings and large windows flood the living space with natural light, enhancing the sense of openness and warmth. The primary suite is a luxurious retreat with serene views, a walk-in closet, and a spa-inspired ensuite bath. Additional bedrooms are spacious and versatile—perfect for guests, a home office, or hobbies. Engineered hardwood floors, custom lighting, and designer touches are evident throughout every room. A custom fireplace adds cozy charm to the great room, ideal for relaxing evenings at home. The basement has three large bedrooms and 2 full



bathrooms with an extra washer and dryer. Enjoy direct access to scenic walking trails, community amenities, and recreational facilities just steps away. This home offers a triple over-size heated car garage, surveillant security cameras, electronic keys locks and high-end electronic window covers the perfect blend of modern elegance and everyday comfort in a serene, upscale neighbourhood. Ideal for downsizers, professionals, or anyone seeking stylish single-level living in a premium location. Truly a rare findâ€”schedule your private showing today and experience this remarkable home firsthand!

Built in 2023

Essential Information

MLS® #	A2239536
Price	\$1,739,900
Bedrooms	4
Bathrooms	4.00
Full Baths	3
Half Baths	1
Square Footage	1,752
Acres	0.26
Year Built	2023
Type	Residential
Sub-Type	Detached
Style	Bungalow
Status	Active

Community Information

Address	133 Glyde Park
Subdivision	Elbow Valley West
City	Rural Rocky View County
County	Rocky View County
Province	Alberta
Postal Code	T3Z0A1

Amenities

Amenities	Other
Parking Spaces	3
Parking	Triple Garage Detached
# of Garages	3

Interior

Interior Features	Breakfast Bar, Granite Counters, Kitchen Island, No Smoking Home
Appliances	Built-In Oven, Dishwasher, Microwave, Washer/Dryer Stacked, Window Coverings
Heating	Forced Air, Natural Gas
Cooling	Central Air
Fireplace	Yes
# of Fireplaces	1
Fireplaces	Electric
Has Basement	Yes
Basement	Finished, Full

Exterior

Exterior Features	Balcony, Barbecue, BBQ gas line, Garden
Lot Description	Back Yard, Backs on to Park/Green Space, Cul-De-Sac, Environmental Reserve, Lake, Landscaped, Conservation
Roof	Asphalt Shingle
Construction	Stone, Stucco
Foundation	Poured Concrete

Additional Information

Date Listed	July 14th, 2025
Days on Market	3
Zoning	DC
HOA Fees	195
HOA Fees Freq.	MON

Listing Details

Listing Office	KIC Realty
----------------	------------

Data is supplied by Pillar 9â„¢ MLS® System. Pillar 9â„¢ is the owner of the copyright in its MLS® System. Data is deemed reliable but is not guaranteed accurate by Pillar 9â„¢. The trademarks MLS®, Multiple Listing Service® and the associated logos are owned by The Canadian Real Estate Association (CREA) and identify the quality of services provided by real estate professionals who are members of CREA. Used under license.