

\$329,900 - 109 Princeton Crescent W, Lethbridge

MLS® #A2244239

\$329,900

4 Bedroom, 2.00 Bathroom, 874 sqft

Residential on 0.13 Acres

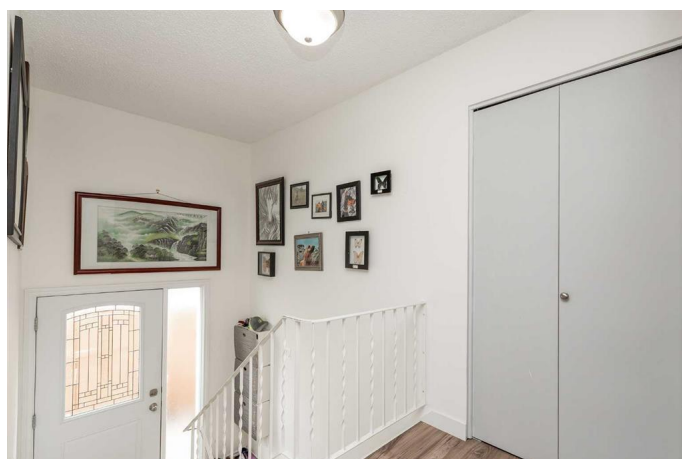
Varsity Village, Lethbridge, Alberta

Tucked away on a quiet crescent in the heart of West Lethbridge, 109 Princeton Cres W offers the space youâ€™ve been looking for. This 2 up 2 down 4-bedroom, 2-bathroom home features a bright, open-concept main floor that feels instantly welcoming. Both bathrooms have been recently renovated with a clean, modern finish, and the new windows throughout add to the fresh feel of the home. Step outside and youâ€™ll find a large, private backyard with no neighbours behindâ€”a rare find that adds a peaceful touch to your outdoor space. With plenty of parking and a layout that works for families, roommates, or guests, this home is move-in ready and full of potential.

Built in 1980

Essential Information

MLS® #	A2244239
Price	\$329,900
Bedrooms	4
Bathrooms	2.00
Full Baths	2
Square Footage	874
Acres	0.13
Year Built	1980
Type	Residential
Sub-Type	Detached
Style	Bi-Level
Status	Active



Community Information

Address	109 Princeton Crescent W
Subdivision	Varsity Village
City	Lethbridge
County	Lethbridge
Province	Alberta
Postal Code	T1K 4S5

Amenities

Parking Spaces	1
Parking	Off Street

Interior

Interior Features	Storage
Appliances	See Remarks
Heating	Forced Air
Cooling	None
Has Basement	Yes
Basement	Finished, Full

Exterior

Exterior Features	None
Lot Description	Back Yard, Landscaped, Fruit Trees/Shrub(s)
Roof	Asphalt Shingle
Construction	Concrete, Stucco, Wood Frame
Foundation	Poured Concrete

Additional Information

Date Listed	August 5th, 2025
Days on Market	2
Zoning	R-LB

Listing Details

Listing Office	Lethbridge Real Estate.com
----------------	----------------------------

Data is supplied by Pillar 9â„¢ MLSÂ® System. Pillar 9â„¢ is the owner of the copyright in its MLSÂ® System. Data is deemed reliable but is not guaranteed accurate by Pillar 9â„¢. The trademarks MLSÂ®, Multiple Listing ServiceÂ® and the associated logos are owned by The Canadian Real Estate Association (CREA) and identify the quality of services provided by real estate professionals who are members of CREA. Used under license.