

\$665,000 - Range Road 285, Rural Rocky View County

MLS® #A2245514

\$665,000

0 Bedroom, 0.00 Bathroom,
Land on 8.92 Acres

NONE, Rural Rocky View County, Alberta

Amazing Opportunity to buy 8.92 +/- Acres of Vacant Land only half Mile East from Airdrie City Limits with Mountain Views to the West. Prairie views to the East. You will not find a better location than this. Zoned R-RUR possible further subdivision in the future. Drilled water well with a lots off water quantity and it is ready for your dream homes.

Essential Information

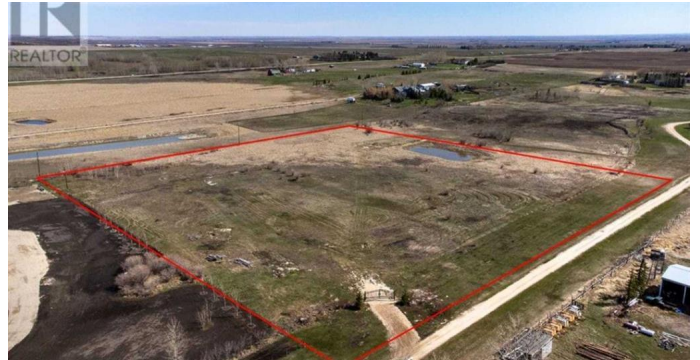
MLS® #	A2245514
Price	\$665,000
Bathrooms	0.00
Acres	8.92
Type	Land
Sub-Type	Residential Land
Status	Active

Community Information

Address	Range Road 285
Subdivision	NONE
City	Rural Rocky View County
County	Rocky View County
Province	Alberta
Postal Code	T4A 2S7

Additional Information

Date Listed	August 3rd, 2025
Zoning	R-RUR



Listing Details

Listing Office Five Star Realty

Data is supplied by Pillar 9â,,ç MLSÂ® System. Pillar 9â,,ç is the owner of the copyright in its MLSÂ® System. Data is deemed reliable but is not guaranteed accurate by Pillar 9â,,ç. The trademarks MLSÂ®, Multiple Listing ServiceÂ® and the associated logos are owned by The Canadian Real Estate Association (CREA) and identify the quality of services provided by real estate professionals who are members of CREA. Used under license.