

# \$569,000 - 420 Slade Drive, Nanton

MLS® #A2245904

**\$569,000**

5 Bedroom, 3.00 Bathroom, 1,340 sqft  
Residential on 0.18 Acres

NONE, Nanton, Alberta

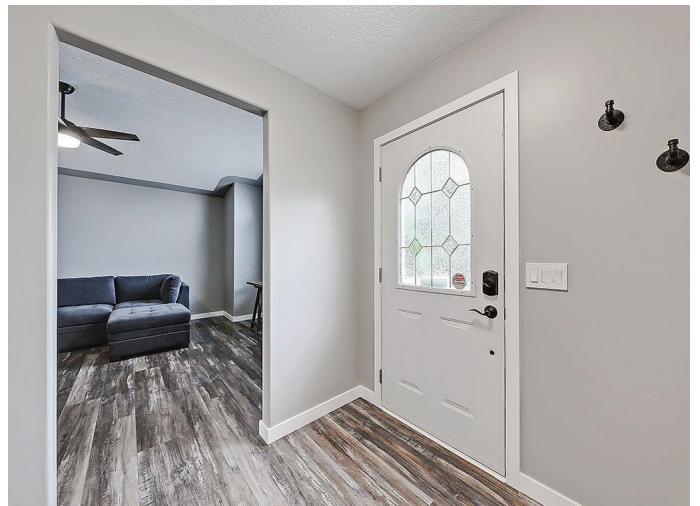
Welcome to this stunning, newly renovated 1,339 sq ft bungalow, perfectly situated in a quiet, friendly neighborhood in Nanton. Featuring 5 bedrooms and 3 bathrooms, this home has been thoughtfully updated from top to bottom—new flooring throughout, fresh paint, new interior doors, and completely redesigned bathrooms—don't forget the Central Air!!!

The main level offers a bright and inviting living room, a cheerful kitchen with updated appliances, and a generously sized primary bedroom complete with a stylish 3-piece ensuite. You'll also find two additional bedrooms, a 4-piece bathroom, main floor laundry, and plenty of natural light in every room.

Downstairs, the beautifully finished basement is just as impressive—featuring a spacious family room, two more bedrooms, a full 4-piece bathroom, and an expansive storage area with workshop space.

Step outside and discover your own backyard retreat! Surrounded by mature trees for privacy, this outdoor space includes a fire pit area, children's play structure, hot tub, and a brand-new deck, ideal for entertaining family and friends. Plus, there's extra RV parking for your toys.

A double attached heated garage offers even more storage and includes a workbench for projects big or small. Outfitted with a 240 volt outlet—perfect for your welder, future vehicle charging station and other equipment!



This home is the perfect balance of tranquility and convenience. Close to schools, grocery store, medical clinic, library, banks, and charming downtown shops. Whether youâ€™re raising a family or looking to retire in a peaceful, walkable community, this property checks all the boxes. Call your fave Realtor and book a showing today!!

Built in 1995

**Essential Information**

MLS® #	A2245904
Price	\$569,000
Bedrooms	5
Bathrooms	3.00
Full Baths	3
Square Footage	1,340
Acres	0.18
Year Built	1995
Type	Residential
Sub-Type	Detached
Style	Bungalow
Status	Active

**Community Information**

Address	420 Slade Drive
Subdivision	NONE
City	Nanton
County	Willow Creek No. 26, M.D. of
Province	Alberta
Postal Code	T0L 1R0

**Amenities**

Parking Spaces	4
Parking	Double Garage Attached, Garage Door Opener, Heated Garage, RV Access/Parking
# of Garages	2

**Interior**

Interior Features	Ceiling Fan(s), No Smoking Home, Pantry, Storage
Appliances	Central Air Conditioner, Dishwasher, Dryer, Electric Stove, Garage Control(s), Garburator, Refrigerator, Washer, Window Coverings
Heating	Forced Air, Natural Gas
Cooling	Central Air
Has Basement	Yes
Basement	Finished, Full

## Exterior

Exterior Features	Fire Pit
Lot Description	Back Lane, Rectangular Lot
Roof	Asphalt Shingle
Construction	Stucco, Wood Frame
Foundation	Poured Concrete

## Additional Information

Date Listed	August 10th, 2025
Days on Market	1
Zoning	R-Gen

## Listing Details

Listing Office	Century 21 Foothills Real Estate
----------------	----------------------------------

Data is supplied by Pillar 9â„¢ MLS® System. Pillar 9â„¢ is the owner of the copyright in its MLS® System. Data is deemed reliable but is not guaranteed accurate by Pillar 9â„¢. The trademarks MLS®, Multiple Listing Service® and the associated logos are owned by The Canadian Real Estate Association (CREA) and identify the quality of services provided by real estate professionals who are members of CREA. Used under license.