

\$589,900 - 236 Pinetree Road Ne, Calgary

MLS® #A2246149

\$589,900

4 Bedroom, 3.00 Bathroom, 1,221 sqft

Residential on 0.01 Acres

Pineridge, Calgary, Alberta

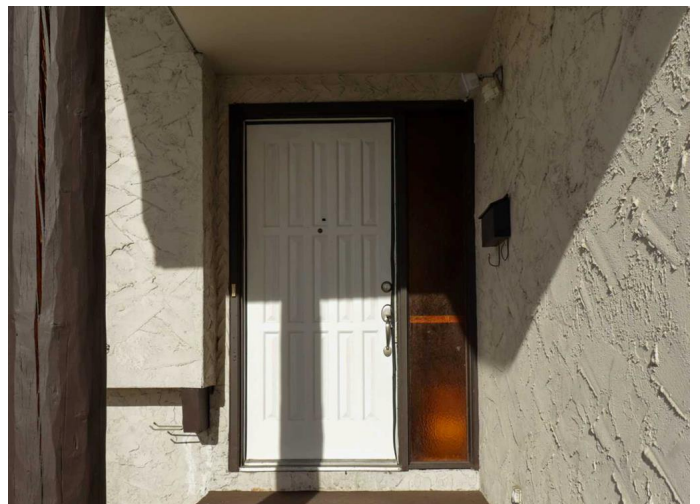
Welcome to this beautifully maintained 3-level split home, offering exceptional versatility and investment potential. Set on a spacious RCG-zoned lot, this property is perfect for homeowners, investors, or developers alike—with potential for future redevelopment, including the addition of a secondary dwelling. The main floor features a bright and inviting layout with three spacious bedrooms, including a primary suite with a 2-piece ensuite, a renovated 4-piece bathroom, a cozy living room with a classic wood-burning fireplace, and a beautifully updated kitchen that flows seamlessly into the dining area. Downstairs, new flooring, renovated last month July 2025 the walk-up basement with a private separate entrance is fully developed as an illegal suite—perfect for extended family or rental income. It includes two generous bedrooms, a 3-piece bathroom, a second kitchen, dedicated living and dining areas, plus a separate laundry area—ideal as a mortgage helper!

Additional highlights:

Oversized heated double garage, Expansive driveway with 4 ample parking spaces for visitors, No neighbors directly across the street.

Recent updates: newer roof, new sheathing, new insulation in attic. Conveniently located close to shopping, schools, major roadways, and public transit.

This property truly has it all—space, flexibility, and future potential. Whether you're looking for a family home with income potential or a prime



development opportunity, this one is not to be missed. Call today to book your private showing!

Built in 1975

Essential Information

| | |
|----------------|---------------|
| MLS® # | A2246149 |
| Price | \$589,900 |
| Bedrooms | 4 |
| Bathrooms | 3.00 |
| Full Baths | 2 |
| Half Baths | 1 |
| Square Footage | 1,221 |
| Acres | 0.01 |
| Year Built | 1975 |
| Type | Residential |
| Sub-Type | Detached |
| Style | 3 Level Split |
| Status | Active |

Community Information

| | |
|-------------|----------------------|
| Address | 236 Pinetree Road Ne |
| Subdivision | Pineridge |
| City | Calgary |
| County | Calgary |
| Province | Alberta |
| Postal Code | T1Y1K3 |

Amenities

| | |
|----------------|------------------------|
| Parking Spaces | 6 |
| Parking | Double Garage Detached |
| # of Garages | 2 |

Interior

| | |
|-------------------|---|
| Interior Features | Central Vacuum, High Ceilings, Pantry, Separate Entrance |
| Appliances | Dishwasher, Dryer, Electric Stove, Garage Control(s), Microwave, Range Hood, Washer |
| Heating | Forced Air |

| | |
|-----------------|--|
| Cooling | None |
| Fireplace | Yes |
| # of Fireplaces | 1 |
| Fireplaces | Wood Burning |
| Has Basement | Yes |
| Basement | Exterior Entry, Finished, Full, Walk-Out |

Exterior

| | |
|-------------------|---|
| Exterior Features | Dog Run, Garden, Private Entrance, Private Yard |
| Lot Description | Back Lane, Back Yard, Rectangular Lot |
| Roof | Asphalt Shingle |
| Construction | Stucco |
| Foundation | Poured Concrete |

Additional Information

| | |
|----------------|------------------|
| Date Listed | August 7th, 2025 |
| Days on Market | 2 |
| Zoning | R-CG |

Listing Details

| | |
|----------------|------------|
| Listing Office | CIR Realty |
|----------------|------------|

Data is supplied by Pillar 9â„¢ MLS® System. Pillar 9â„¢ is the owner of the copyright in its MLS® System. Data is deemed reliable but is not guaranteed accurate by Pillar 9â„¢. The trademarks MLS®, Multiple Listing Service® and the associated logos are owned by The Canadian Real Estate Association (CREA) and identify the quality of services provided by real estate professionals who are members of CREA. Used under license.