

\$574,900 - 14 Everridge Common Sw, Calgary

MLS® #A2246745

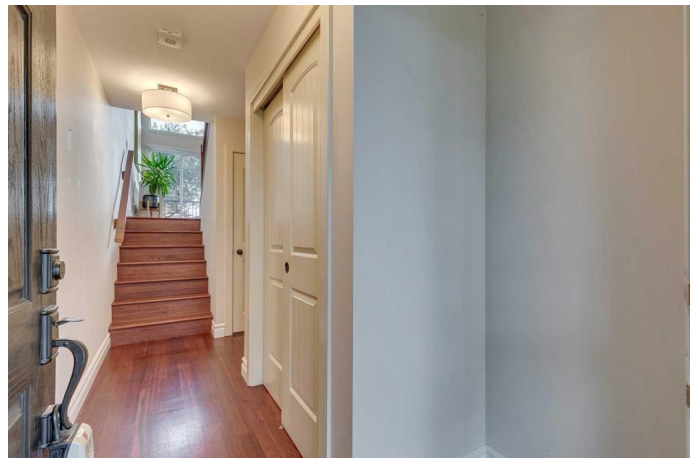
\$574,900

2 Bedroom, 3.00 Bathroom, 1,414 sqft

Residential on 0.00 Acres

Evergreen, Calgary, Alberta

Welcome to Eversyde on the Park, a quiet little gem in the heart of Evergreen. This isn't just any townhome—it's a meticulously cared-for, 4-level split end unit with over 1,400 sq. ft. of developed space, loaded with upgrades you won't find anywhere else. Inside, you'll notice the details right away—real exotic Merbau hardwood floors, a marble-faced gas fireplace with a thermostat-controlled fan, quartz countertops, and a sleek new stainless steel appliance package (including a slimline over-the-range microwave). The kitchen and dining area are drenched in natural light and overlook the living room, making it feel open and connected. Both upper-level bedrooms have walk-in closets, full ensuite baths, and their own study nooks. This home is wired for modern living with Lutron Caseta WiFi smart lighting, plus it comes with a water softener, central vacuum, and a fully developed basement with an insulated floor panel system. The double attached garage has a brand-new door, storage cabinets, and a WiFi opener for convenience. Step out the patio doors to your deck, fire up the BBQ, and take in the tranquil view of the pond. There's also a separate side entrance to your private backyard, complete with an upper deck and ground-level patio—perfect for coffee in the morning or a glass of wine in the evening. Living here means you're steps from walking paths, playgrounds, and parks. You've got easy access to Stoney Trail and Macleod Trail,



making commutes a breeze. Groceries, restaurants, coffee shops, and big-box stores are all just minutes away in Shawnessy Shopping Centre. Schools and transit are nearby, and Fish Creek Park is right around the corner for weekend adventures. This one checks every boxâ€”and then some. For more information and photos, click the links below!

Built in 2006

Essential Information

MLS® #	A2246745
Price	\$574,900
Bedrooms	2
Bathrooms	3.00
Full Baths	2
Half Baths	1
Square Footage	1,414
Acres	0.00
Year Built	2006
Type	Residential
Sub-Type	Row/Townhouse
Style	4 Level Split
Status	Active

Community Information

Address	14 Eversidge Common Sw
Subdivision	Evergreen
City	Calgary
County	Calgary
Province	Alberta
Postal Code	T2Y 5G9

Amenities

Amenities	None
Parking Spaces	4
Parking	Double Garage Attached, Driveway
# of Garages	2

Interior

Interior Features	Kitchen Island, No Smoking Home, Quartz Counters, Vinyl Windows
Appliances	Dishwasher, Dryer, Electric Stove, Garage Control(s), Microwave Hood Fan, See Remarks, Window Coverings, ENERGY STAR Qualified Dishwasher
Heating	Forced Air, Solar
Cooling	None
Fireplace	Yes
# of Fireplaces	1
Fireplaces	Gas, Living Room
Has Basement	Yes
Basement	Finished, Full

Exterior

Exterior Features	Private Yard
Lot Description	Corner Lot, Level, Private
Roof	Asphalt Shingle
Construction	Vinyl Siding, Wood Frame
Foundation	Poured Concrete

Additional Information

Date Listed	August 14th, 2025
Days on Market	1
Zoning	R-2M

Listing Details

Listing Office	eXp Realty
----------------	------------

Data is supplied by Pillar 9â„¢ MLSÂ® System. Pillar 9â„¢ is the owner of the copyright in its MLSÂ® System. Data is deemed reliable but is not guaranteed accurate by Pillar 9â„¢. The trademarks MLSÂ®, Multiple Listing ServiceÂ® and the associated logos are owned by The Canadian Real Estate Association (CREA) and identify the quality of services provided by real estate professionals who are members of CREA. Used under license.