

# \$769,900 - 101 Bridlecreek Park Sw, Calgary

MLS® #A2247015

**\$769,900**

6 Bedroom, 4.00 Bathroom, 2,269 sqft

Residential on 0.11 Acres

Bridlewood, Calgary, Alberta

Welcome to Your Dream Home in Bridlewood!

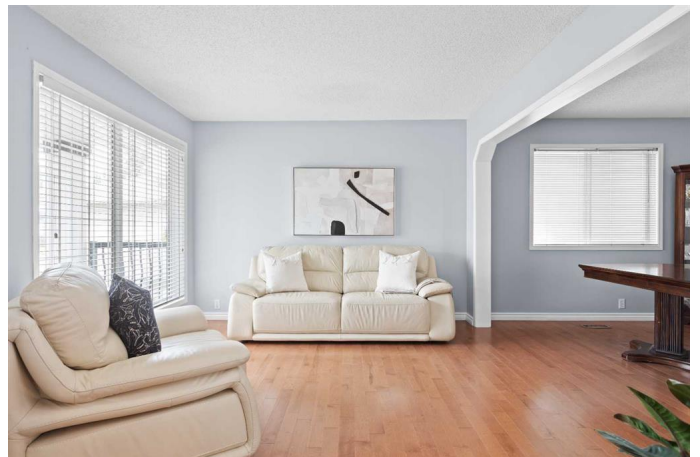
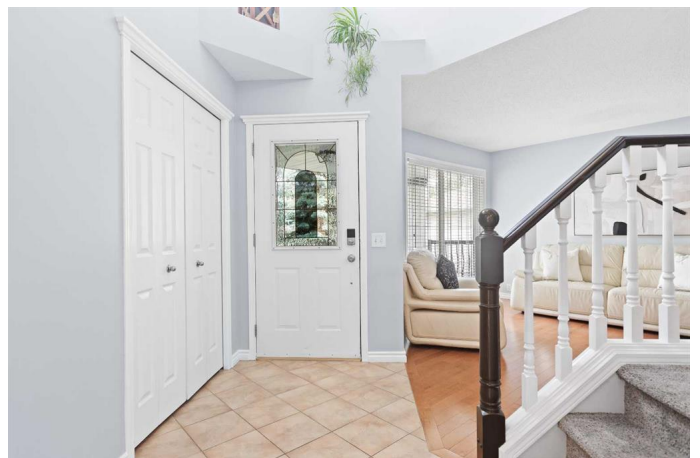
This beautifully maintained 6-bedroom, 3.5-bathroom detached home offers the perfect blend of comfort, space, and versatility â€” complete with a fully developed walk-out basement featuring a 2-bedroom illegal suite.

Situated on a quiet street and backing onto a peaceful pond, youâ€™ll enjoy stunning views and a serene backdrop year-round. Inside, the freshly painted interior boasts hardwood flooring, a bright open-concept layout, and a cozy gas fireplace in the living room â€” perfect for family gatherings. The well-appointed kitchen flows seamlessly into the dining area, making entertaining a breeze.

Upstairs, the spacious primary suite is a true retreat, featuring a built-in soaker tub with tranquil pond views, a stand-up shower, and a walk-in closet. Additional upper bedrooms are generous in size and filled with natural light.

The walk-out basement offers excellent potential for extended family or rental income with its private entrance, full kitchen, living area, and two bedrooms.

Outside, youâ€™ll find a fully fenced backyard, perfect for kids, pets, and summer gatherings â€” all with the pond as your backdrop.



Recent upgrades provide peace of mind, including a newer roof and most of the siding (2022), plus a furnace and central air conditioning (2019).

Additional features include a double attached garage and the unbeatable location close to parks, schools, shopping, and transit.

This is more than a home â€” itâ€™s a lifestyle, with nature at your back door and the amenities of Bridlewood just minutes away.

Donâ€™t miss this rare find â€” schedule your private showing today!

Built in 1997

### Essential Information

MLS® #	A2247015
Price	\$769,900
Bedrooms	6
Bathrooms	4.00
Full Baths	3
Half Baths	1
Square Footage	2,269
Acres	0.11
Year Built	1997
Type	Residential
Sub-Type	Detached
Style	2 Storey
Status	Active

### Community Information

Address	101 Bridlecreek Park Sw
Subdivision	Bridlewood
City	Calgary
County	Calgary
Province	Alberta
Postal Code	T2Y 3N8

## Amenities

Parking Spaces	4
Parking	Double Garage Attached
# of Garages	2

## Interior

Interior Features	Breakfast Bar, Closet Organizers, High Ceilings, Kitchen Island, Open Floorplan, Pantry, Separate Entrance, Storage, Walk-In Closet(s)
Appliances	Central Air Conditioner, Dishwasher, Electric Stove, Garage Control(s), Microwave, Range Hood, Refrigerator, Washer/Dryer
Heating	Forced Air, Natural Gas
Cooling	Central Air
Fireplace	Yes
# of Fireplaces	1
Fireplaces	Gas
Has Basement	Yes
Basement	Exterior Entry, Finished, Full, Suite, Walk-Out

## Exterior

Exterior Features	Garden, Lighting
Lot Description	Back Yard, Front Yard, Landscaped, Lawn, Level, Low Maintenance Landscape, No Neighbours Behind, Rectangular Lot, Street Lighting, Views, Lake
Roof	Asphalt Shingle
Construction	Vinyl Siding, Wood Frame
Foundation	Poured Concrete

## Additional Information

Date Listed	August 8th, 2025
Zoning	R-G

## Listing Details

Listing Office	CIR Realty
----------------	------------

Data is supplied by Pillar 9â„¢ MLS® System. Pillar 9â„¢ is the owner of the copyright in its MLS® System. Data is deemed reliable but is not guaranteed accurate by Pillar 9â„¢. The trademarks MLS®, Multiple Listing Service® and the associated logos are owned by The Canadian Real Estate Association (CREA) and identify the quality of services provided by real estate professionals who are members of CREA. Used under license.