

\$15,000 - 116 Railway Avenue W, Schuler

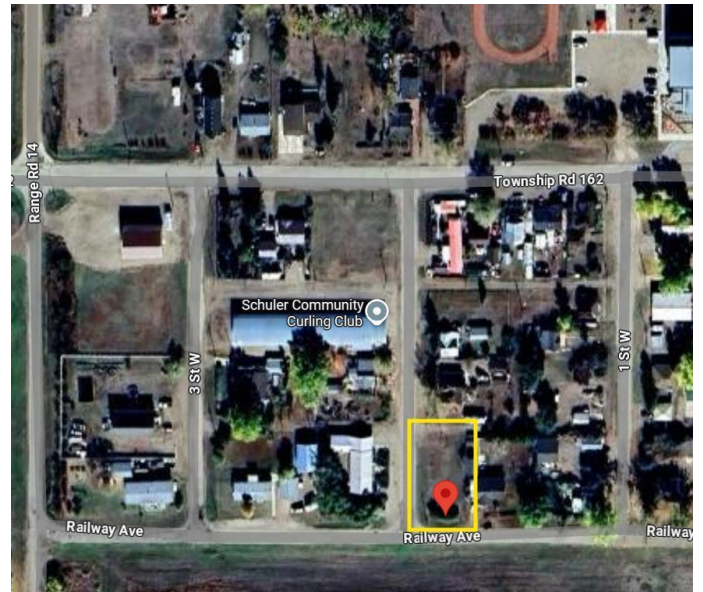
MLS® #A2247160

\$15,000

0 Bedroom, 0.00 Bathroom,
Land on 0.14 Acres

NONE, Schuler, Alberta

Here's your chance to secure a 50x120 serviced lot in the quaint and quiet Hamlet of Schuler – near Medicine Hat. This welcoming community offers a peaceful lifestyle. Schuler is home to a newer elementary school, great recreation facilities, and a warm, friendly community spirit. Whether you're looking to build your forever home away from the hustle and bustle or invest in small-town living, this lot is a fantastic opportunity to make your vision a reality.



Essential Information

MLS® #	A2247160
Price	\$15,000
Bathrooms	0.00
Acres	0.14
Type	Land
Sub-Type	Residential Land
Status	Active

Community Information

Address	116 Railway Avenue W
Subdivision	NONE
City	Schuler
County	Cypress County
Province	Alberta
Postal Code	T0J 3B0

Additional Information

Date Listed August 8th, 2025

Zoning HR

Listing Details

Listing Office RE/MAX MEDALTA REAL ESTATE

Data is supplied by Pillar 9â„¢ MLS® System. Pillar 9â„¢ is the owner of the copyright in its MLS® System. Data is deemed reliable but is not guaranteed accurate by Pillar 9â„¢. The trademarks MLS®, Multiple Listing Service® and the associated logos are owned by The Canadian Real Estate Association (CREA) and identify the quality of services provided by real estate professionals who are members of CREA. Used under license.