

# \$149,900 - 311, 1595 Southview Drive Se, Medicine Hat

MLS® #A2247780

**\$149,900**

1 Bedroom, 1.00 Bathroom, 535 sqft

Residential on 0.00 Acres

Southview-Park Meadows, Medicine Hat, Alberta

Welcome to The Wellington, one of Medicine Hat's most sought-after buildings for transitional and independent living. This well-maintained 1-bedroom, 1-bathroom condo is truly move-in ready, featuring a new A/C unit and updated flooring.

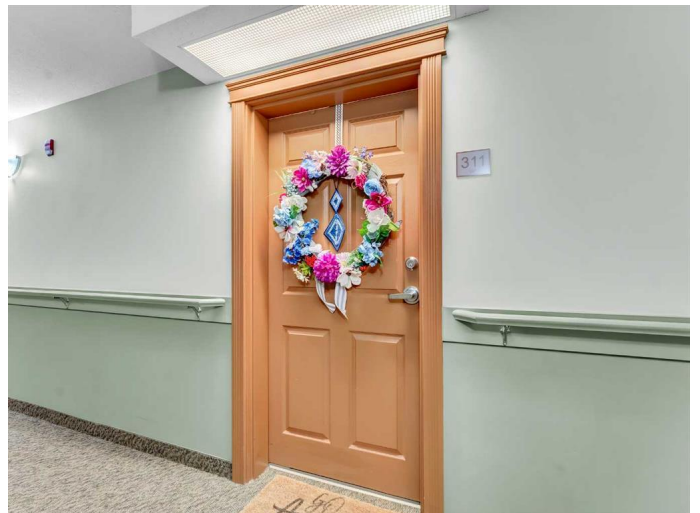
Designed for both comfort and accessibility, the unit offers a full kitchen, cozy bedroom, and a spacious bathroom complete with a walk-in shower—ideal for ease of use and added safety. There's also a convenient storage room for your extra belongings, and laundry facilities are located just down the hall.

Perfect for seniors looking to downsize or live more independently, this condo also presents a great opportunity for investors seeking a reliable rental in a well-managed building. Monthly condo fees include water, heat, and electricity, making budgeting simple.

The Wellington provides a secure, community-oriented environment with optional in-house services available to suit your lifestyle. Whether you're after peace of mind, convenience, or a solid investment, this condo is an excellent choice.

Built in 2005

## Essential Information



MLS® #	A2247780
Price	\$149,900
Bedrooms	1
Bathrooms	1.00
Full Baths	1
Square Footage	535
Acres	0.00
Year Built	2005
Type	Residential
Sub-Type	Apartment
Style	Single Level Unit
Status	Active

### Community Information

Address	311, 1595 Southview Drive Se
Subdivision	Southview-Park Meadows
City	Medicine Hat
County	Medicine Hat
Province	Alberta
Postal Code	T1B0A1

### Amenities

Amenities	Clubhouse, Community Gardens, Elevator(s), Laundry, Parking, Party Room, Picnic Area, Recreation Facilities, Trash, Visitor Parking
Parking	None

### Interior

Interior Features	See Remarks
Appliances	Microwave, Range Hood, Refrigerator, Stove(s)
Heating	Forced Air
Cooling	Central Air
# of Stories	4

### Exterior

Exterior Features	Balcony
Construction	Unknown

### Additional Information

Date Listed	August 11th, 2025
-------------	-------------------

Zoning

R-MD

## **Listing Details**

Listing Office

ROYAL LEPAGE COMMUNITY REALTY

Data is supplied by Pillar 9â„¢ MLS® System. Pillar 9â„¢ is the owner of the copyright in its MLS® System. Data is deemed reliable but is not guaranteed accurate by Pillar 9â„¢. The trademarks MLS®, Multiple Listing Service® and the associated logos are owned by The Canadian Real Estate Association (CREA) and identify the quality of services provided by real estate professionals who are members of CREA. Used under license.